

A decorative graphic on the left side of the slide, featuring a blue and white geometric design with various icons (gear, envelope, refresh, people, atom, document, keyboard) connected by lines, suggesting a network or system architecture.

# **ActiveImage**<sup>TM</sup> 2022

## PROTECTOR

Update released on February 14, 2024

~ Summary of New Features ~

February 14, 2024  
Actiphy Inc.

## System and data protection solution supporting physical / virtual / cloud environment

\*Indicates a new feature of update version released on February 14, 2024

A variety of Cloud storages are supported (additional multiple cloud services are supported.)\*

Actiphy StorageServer Option integrated in ActiveImage Protector™ provides backup destination storage dedicated to ActiveImage Protector backup operation

New tracking driver (disk block change tracking for incremental backup)

New QuickRecovery feature (pre-prepared recovery environment )

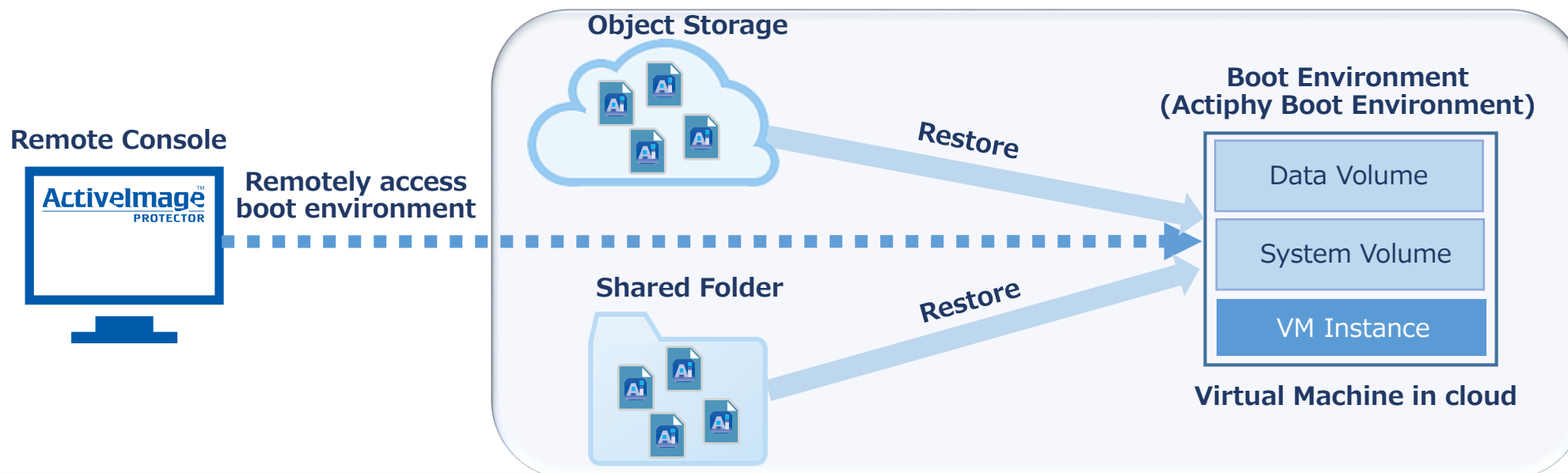
Recovery Media Maker feature enables to create bootable recovery media with the backup source machine's image embedded for an ideal disaster recovery (DR) solution.

Support for VMware vSphere First Class Disk (FCD)

## Back up virtual machines in cloud environment using mostly the same operating procedures as on-premise environment

- Cloud services including Google Cloud Platform, Oracle Cloud Infrastructure (OCI) as well as Amazon Web Services (AWS), Microsoft Azure are supported.
- Remotely access ActiveImage Boot Environment booted directly from RescueBoot and restore the failed system of a virtual machine from a backup in cloud environment.
- Save your backups to any available storage location including file server in VLAN or object storage on cloud.
- ActiveImage Protector™ Cloud license can be applied to one cloud environment, enabling to back up a maximum of five virtual machines configured in the cloud environment.

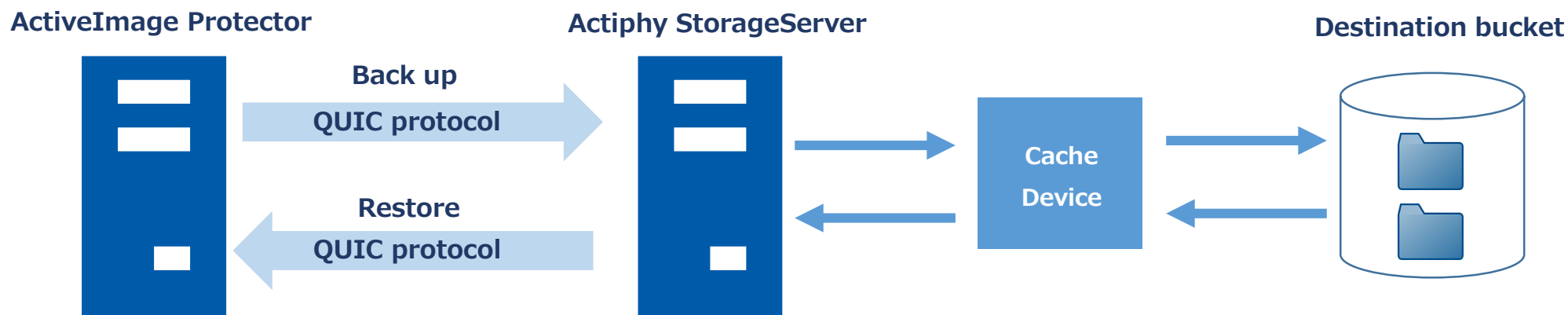
### Remotely restore virtual machines configured in cloud



## Actiphy StorageServer Option provides the secure destination storage dedicated to ActiveImage Protector backup operation

- Install ActiveImage Protector agent on destination server to build secured backup storage for exclusive use with ActiveImage Protector.
- Actiphy StorageServer integrated in ActiveImage Protector provides an independent destination storage for backup operation, protecting the backup image files from being compromised by a ransomware attack.
- Actiphy StorageServer uses QUIC protocol for data transmission, enabling to transfer backup data more safely and efficiently.
- Actiphy's StorageServer is engineered to take advantage of cache device in storage server, delivering faster data transfer speed and secured backup process.
- Actiphy StorageServer is available in Windows and Docker editions.

### Build secured backup storage for exclusive use with ActiveImage Protector

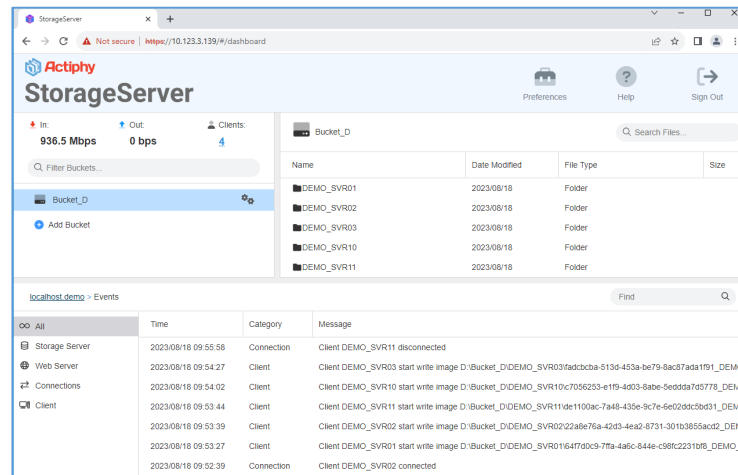


\*QUIC protocol: Communication protocol enabling to transfer data more accurately than TCP and faster than UDP.

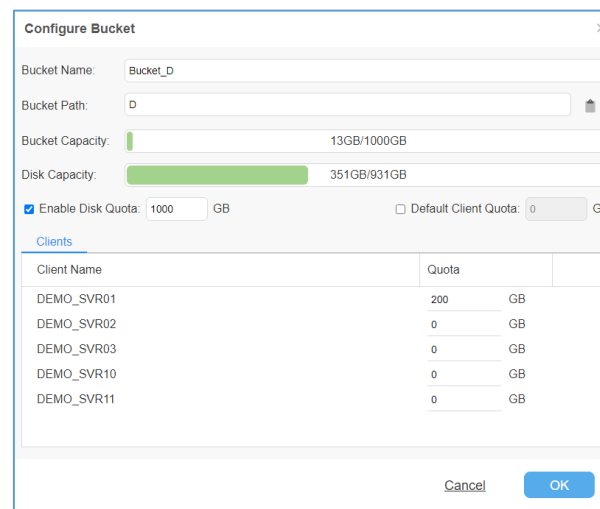
## Actiphy StorageServer's Management Web Console

- Web console installed on your computer provides tools for efficient management for Actiphy StorageServer operations.
- Web console provides tools for efficient operations, i.e., adding buckets and managing bucket quota, configuring the settings for cache device, monitoring data receiving / transferring speed, the number of the remotely connected clients, information of the events, etc.
- Google Chrome Version 59 or later / Microsoft Edge Version 42 or later / Apple Safari Version 12 or later are supported.

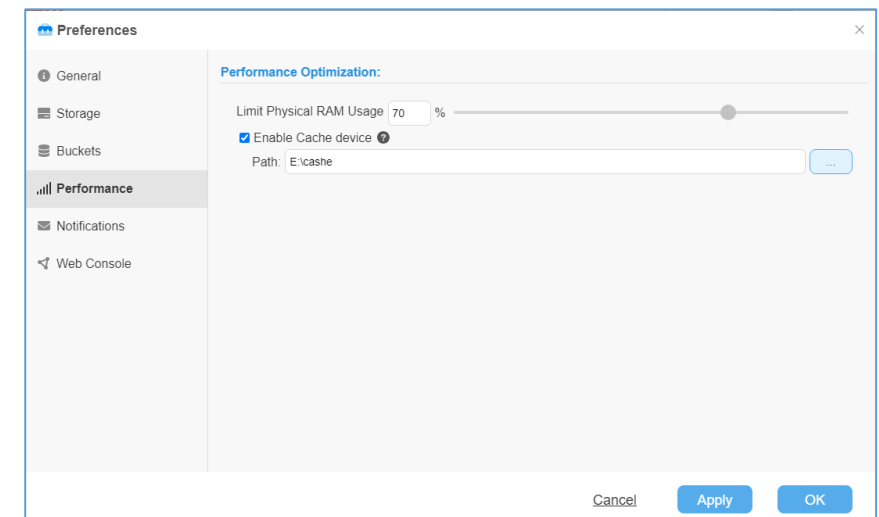
### Actiphy StorageServer's Web console



### Add a bucket in destination storage and configure disk quota settings

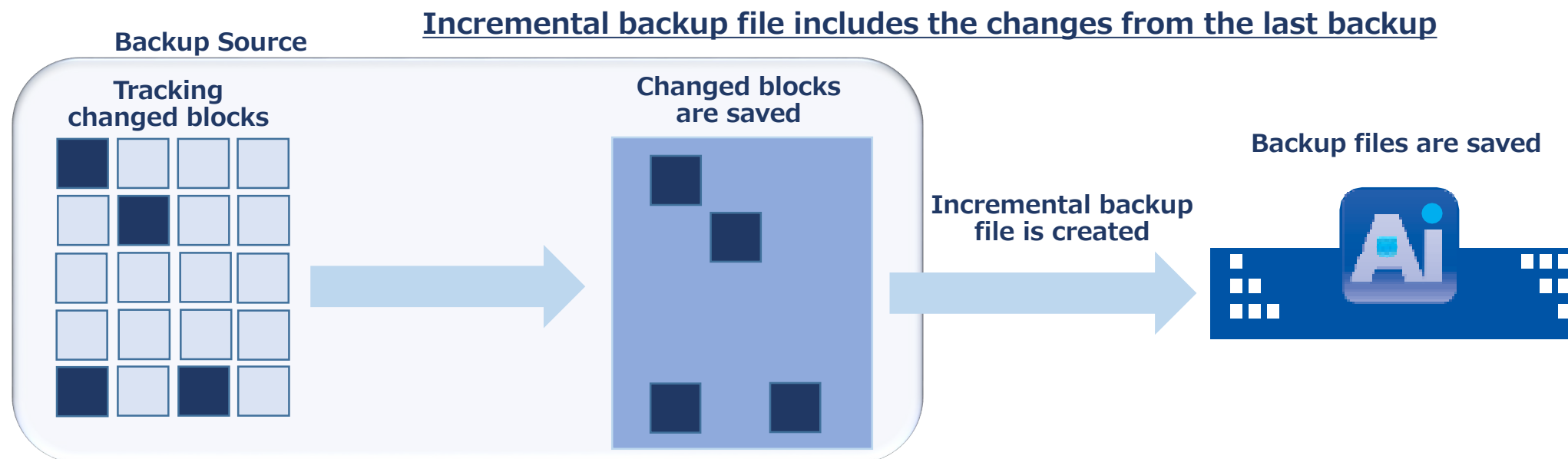


### Configure cache device settings



## The changes made from the last backup are saved in incremental backup files

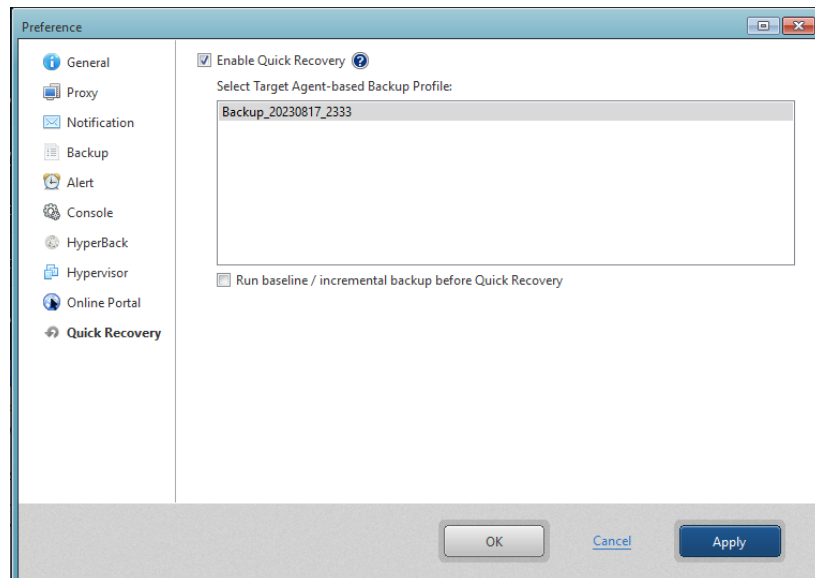
- New Tracking Driver is provided to monitor disk I/O and tracking the changes made from the last backup.
- The block changes are recorded in incremental backup files, saving backup process time.
- The use of the new Tracking Driver suppresses a slowdown of backup processing speed caused by the increasing number of incremental backup files.
- New Tracking Driver requires no reboot after installation. Simple installation of ActiveImage Protector reduces the IT engineers' workload.
- If not using the traditional change tracking driver, Change Block Comparison (CBC) technology is supported to use.



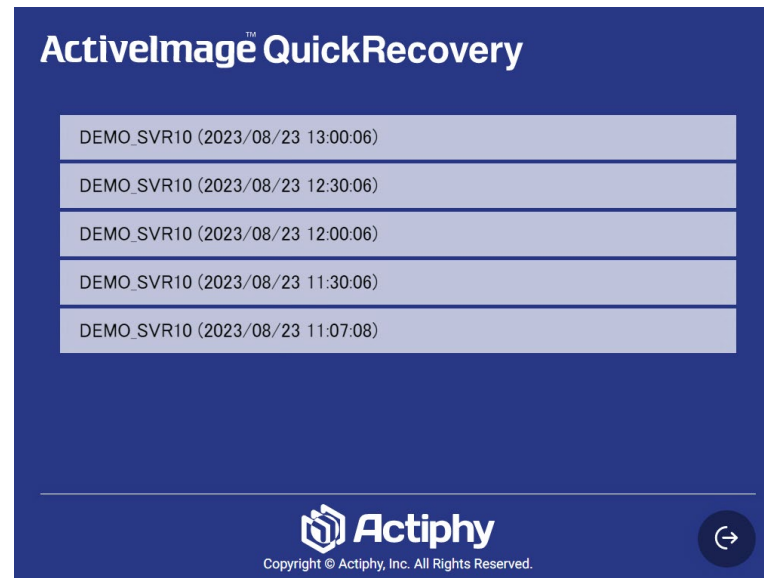
## Immediate Recovery tool

- When booting up the system, automatically start recovery environment without the need for boot environment media.
- Boot up the recovery environment and select a specific restore point from the backup for immediately recovery.
- When restoring the system failed due to a software problem, recovery procedures complete on the restore target machine.

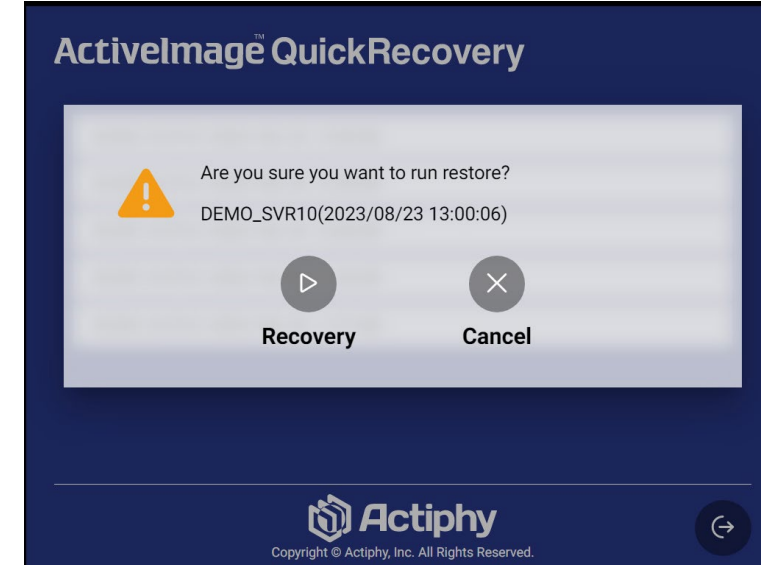
### Enable QuickRecovery and select boot point



### Recovery Point Selection



### Recovery Setting for QuickRecovery

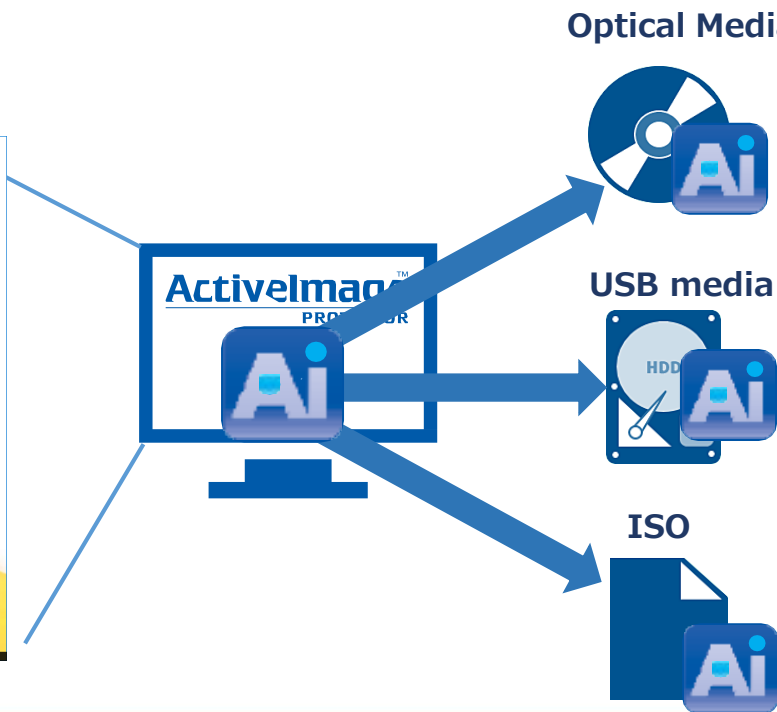
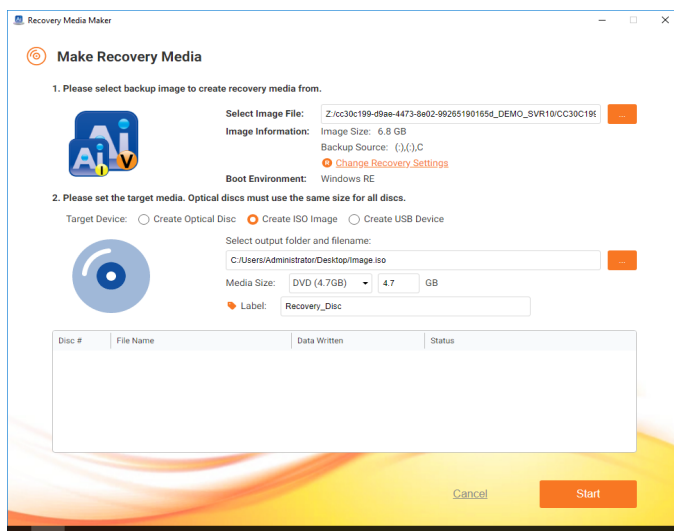




## Create Recovery Media

- Create bootable recovery media with the backup source machine's image embedded for an ideal disaster recovery (DR) solution.
- This feature accommodates various media, including optical media (DVD/Blu-ray disc), USB media (USB HDD / SSD / memory) and ISO.
- Recovery can be performed on dedicated recovery media alone, allowing recovery work to be performed even when the network is not available or when USB media cannot be brought to the site.

### Recovery Media Maker Settings



### Booting bootable recovery media







**For your inquiry, please contact:**  
**Actiphy Inc.**  
**E-mail: [global-sales@actiphy.com](mailto:global-sales@actiphy.com)**  
**Tel: +81-3-5256-0877**



[www.actiphy.com](http://www.actiphy.com)