

ActiveImageTM 2022

PROTECTOR

ActiveImage Protector 2022 Linux

System Protection Solution for Linux Server

~ Product Summary ~

March 8, 2023

Actiphy Inc.

System Protection Solution for Linux Server

- 1 . What is ActiveImage Protector 2022 Linux?
- 2 . Benefits of ActiveImage Protector 2022 Linux
 - Backup / Recovery
 - A wide variety of backup destinations
 - Disaster recovery solution supporting public cloud storage services
- 3 . Main Features
 - Backup / Recovery
 - Flexible backup schedule setting

System Protection Solution for Linux Server

- Intuitive and user friendly GUI provides easy-to-use controls of backup operation of Linux Server
- Supported storages include S3-compatible object storage, SFTP server. **NEW**
- The latest versions of Linux distributions are supported to include RedHat-based and Debian-based Linux distributions. **NEW**

New Features of ActiveImage Protector 2022 Linux

- Supported public cloud storage services include S3-compatible object storage.
- SFTP servers providing secure communication is supported.
- The latest versions of Linux distributions including Red Hat Enterprise Linux 8.5, Debian 11 and Ubuntu 20.04 LTS are supported.
- New Linux-based ActiveImage Protector boot environment builder is provided.
- Build Linux-based ActiveImage Protector boot environment and write ISO file
- Subscription and perpetual licenses are now available.

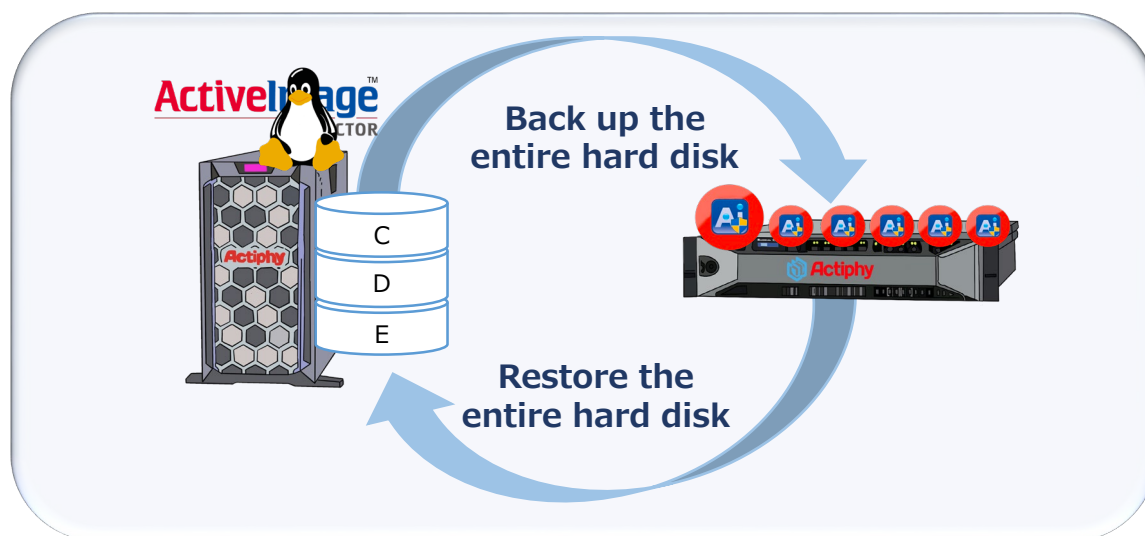


Intuitive and user friendly GUI provides easy-to-use controls of backup operation

Protect the entire Linux system

ActiveImage Protector Linux supports collective backup / restore of disks configured with Linux Logical Volume Manager (LVM), protecting your entire hard disk, including the LVM configured Linux server along with all your applications and data. **In the event of a system failure, backup images can be restored to restart the production system operation.**

Back up and restore the entire system



Simple backup and recovery operation

Intuitive and user friendly management console provides easy-to-use controls of backup settings and recovery operation. **Even an inexperienced Linux system manager can easily start backup operation.**

Wizard-driven interface guides you through configuring backup settings

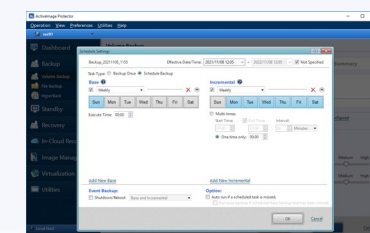
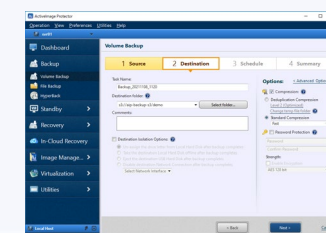
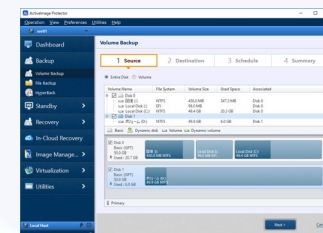
Select a backup source disk



Specify backup destination



Configure backup schedule settings



Wizard-driven interface guides you through restore operation

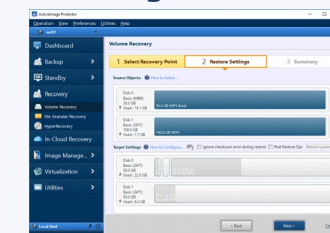
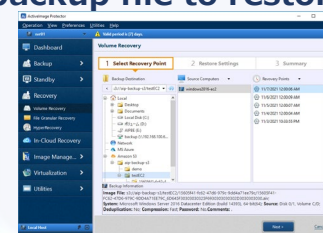
Select point-in-time backup file to restore



Specify restore target disk



Boot up the server and restart operation



Restore to the point-in-time state of the server.
No need to configure the respective settings, i.e., network, etc.

Flexibly select a backup destination depending on the system configuration

Support for a variety of Storage Media

Save your backups to any available storage location, including **USB HDD**, **cloud object storages**, etc., supporting a variety of system configuration and backup policies.

A variety of Storage Media are supported



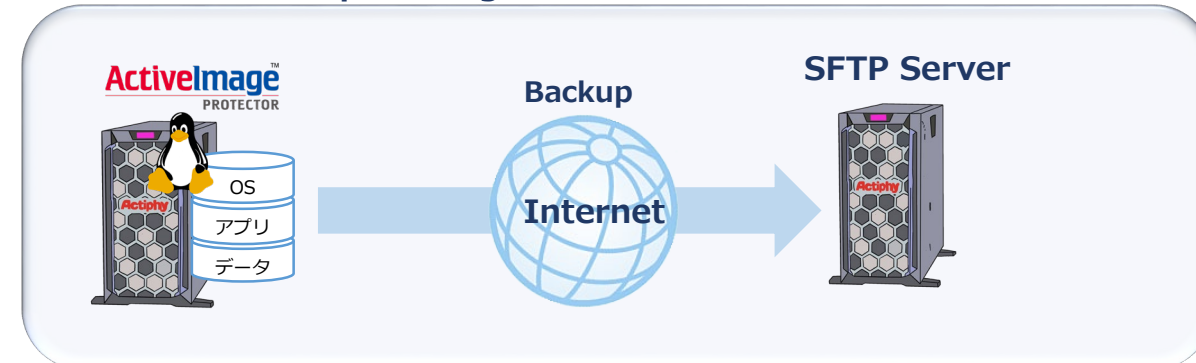
Save your backups to any available storage location **NEW**

Supported storages include **S3-compatible object storage**, **SFTP server** as backup destinations.

Backup systems directly to cloud storage



The backup files can be saved directly to SFTP server providing secure communication

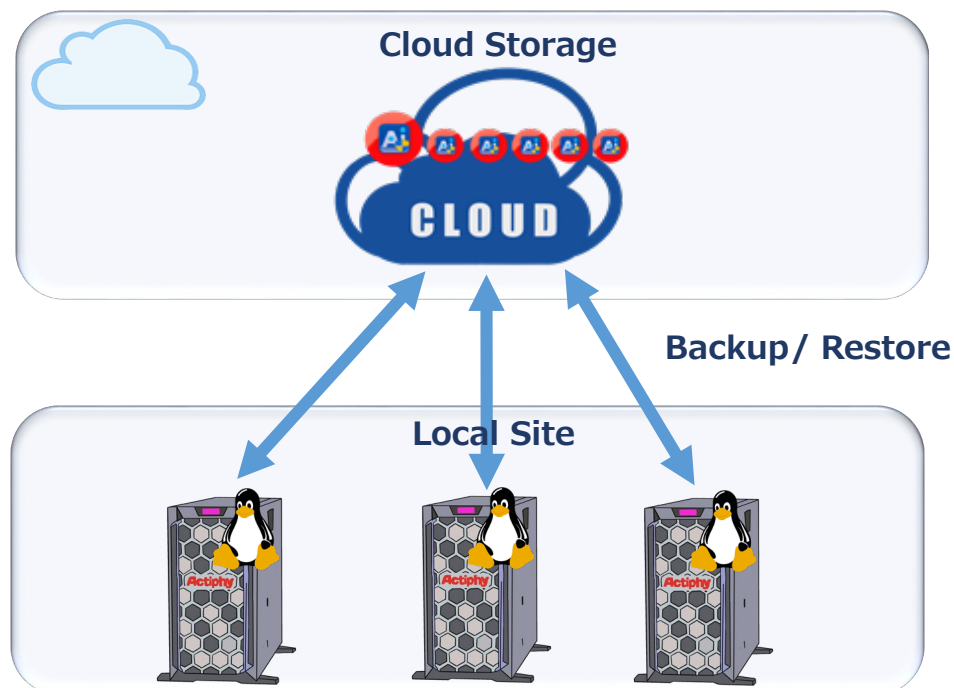


Disaster recovery solution supports public cloud storage services and SFTP server **NEW**

Save the created backups directly to cloud storage

Direct-To-Cloud Backup saves the created backups directly to cloud storage. **Backup of on-premise machines can be directly restored to the point-in-time state before the system failure took place.** You do not need to have a storage at local site to download a backup file from the cloud storage.

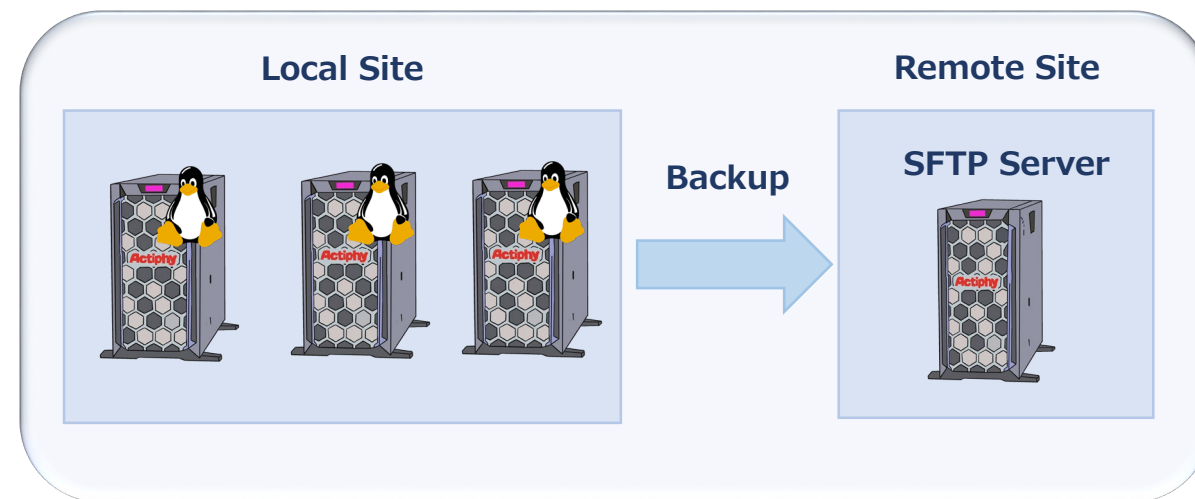
Restore the failed server from a backup file



SFTP Server is supported to direct backup files

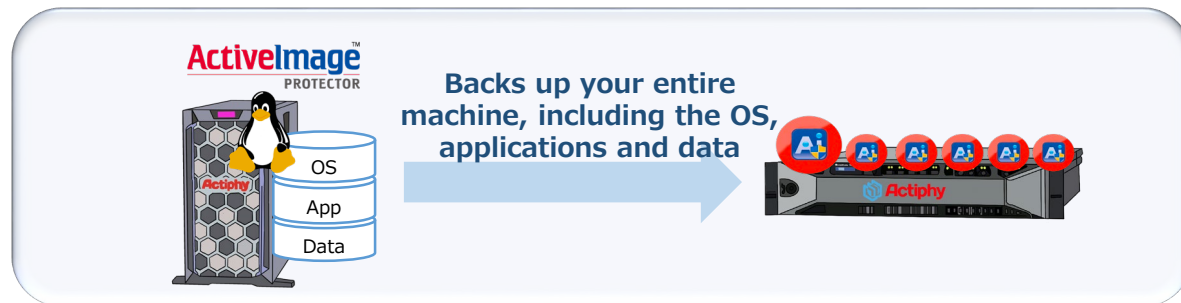
Supported public cloud storage services include S3 compatible object storage and **SFTP protocol is also supported.** The backup files can be saved directly to the server compatible with SFTP at remote site.

Save the created backups directly to remote storage



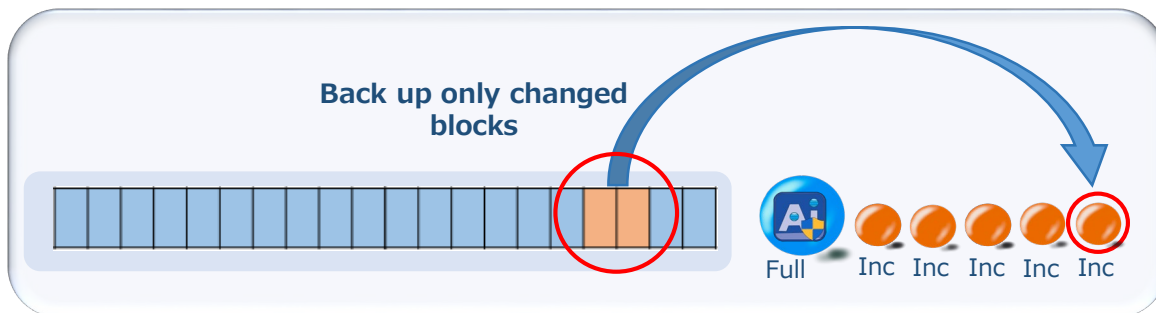
Back up your entire hard disk including OS along with all your applications and data

ActiveImage Protector backs up **live Linux machine, including the OS, applications and data files**. ActiveImage Protector supports collective backup / restore of XFS system volume configured with Logical Volume Manager (LVM).



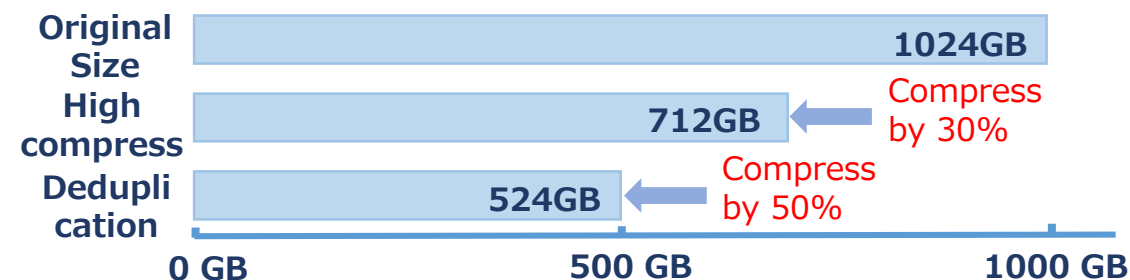
Back up only changes made since the last backup

Incremental backup includes only the changes made since the last backup, minimizing the consumption of the system resources on the machine and storage demand.



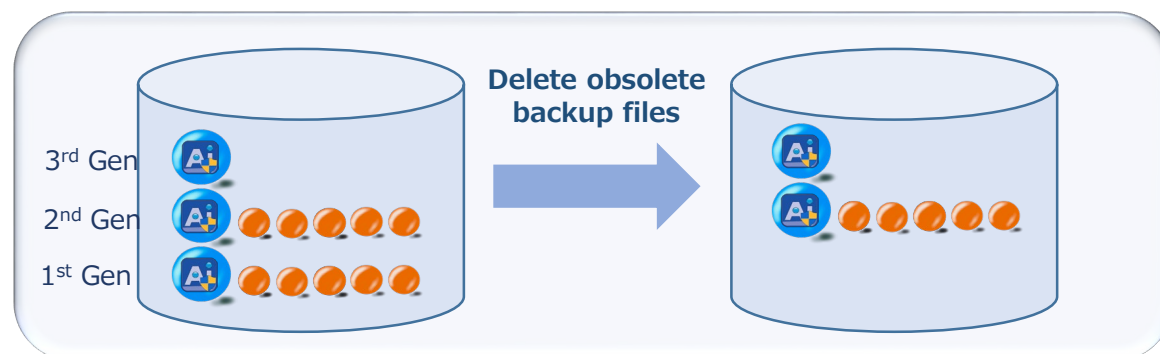
Deduplication Compression reduces storage requirements

Our **Inline Data Deduplication Compression (IDDC)** feature eliminates duplicate data while simultaneously compressing it, resulting in a significant reduction in backup storage requirements and network load.



Use Retention Policy to delete obsolete backup image files, resulting in reduction of the storage space.

Retention Policy feature allows you to **automatically delete the obsolete backup image set** when the number of backup image sets reaches the preset limitation and reduce the storage space requirements.



Restore the entire disk

ActiveImage Protector Linux supports collective backup / restore of disks configured with **Linux Logical Volume Manager (LVM)**. The backups are saved to any available storage location, including local hard disk, on-premise virtual environment and cloud storage.



Restore entire disk



Restore by volume

A specific volume may be selected to restore from point-in-time backup (recovery point). For example, **only "D:" drive can be selected from the data volume to restore.**



Restore by Volume



File / Folder Recovery

OFile Recovery Feature

Granular point-in-time recovery of files and folders is enabled. The stream information and access rights assigned to files are inclusively restored. When you only need specific files to restore in order to restart your duties, **File Recovery feature can provide you with flexible action.**



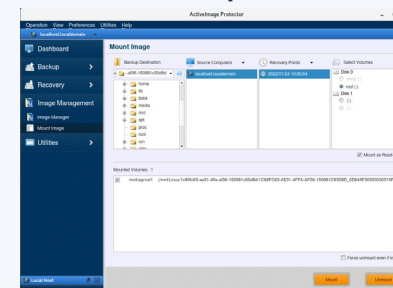
Granular recovery of files and folders



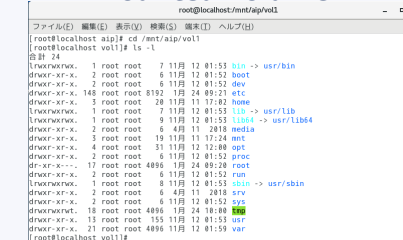
OImage Mount

ActiveImage Protector can quickly mount an image file as a drive, allowing you to **view a list of the files or folders contained in the image file, copy and restore a specific file/folder.**

Mount Backup File



Browse the listed file in mounted volume

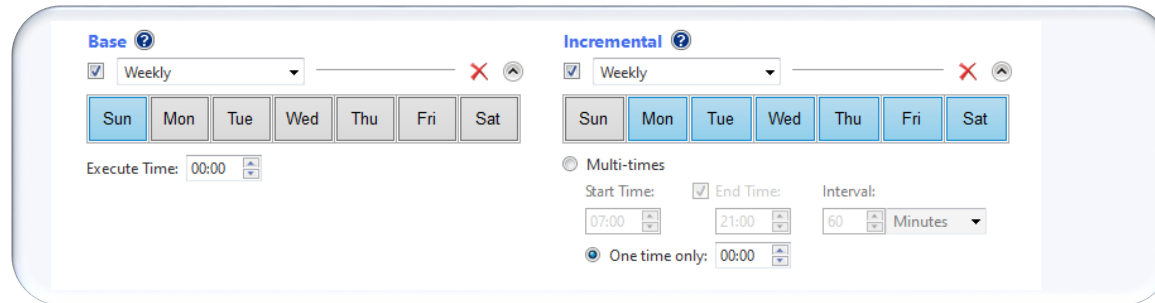


Flexible Multi-scheduling

Backup tasks can be automatically executed according to the one time, weekly or monthly schedule, or a specific day of a week in a specific month.

Weekly

Full backup may be scheduled to execute on the weekend while incremental backup tasks are scheduled from Monday to Friday. Incremental backup can be scheduled to run for multiple times a day.



The screenshot shows the 'Base' and 'Incremental' scheduling panels. The 'Base' panel has a 'Weekly' dropdown, a day selector (Sun-Sat), and an 'Execute Time' of 00:00. The 'Incremental' panel has a 'Weekly' dropdown, a day selector (Sun-Sat), and options for 'Multi-times' (Start Time: 07:00, End Time: 21:00, Interval: 60 Minutes) and 'One time only' (00:00).

Monthly

Select by clicking the date(s) of the month and the time of a day to perform a recurring full base backup tasks while incremental backup tasks are scheduled from Monday to Friday.

Designate Specific Days

Select by clicking a specific days of a week to perform a recurring full base backup while incremental backup tasks are scheduled from Monday to Friday.

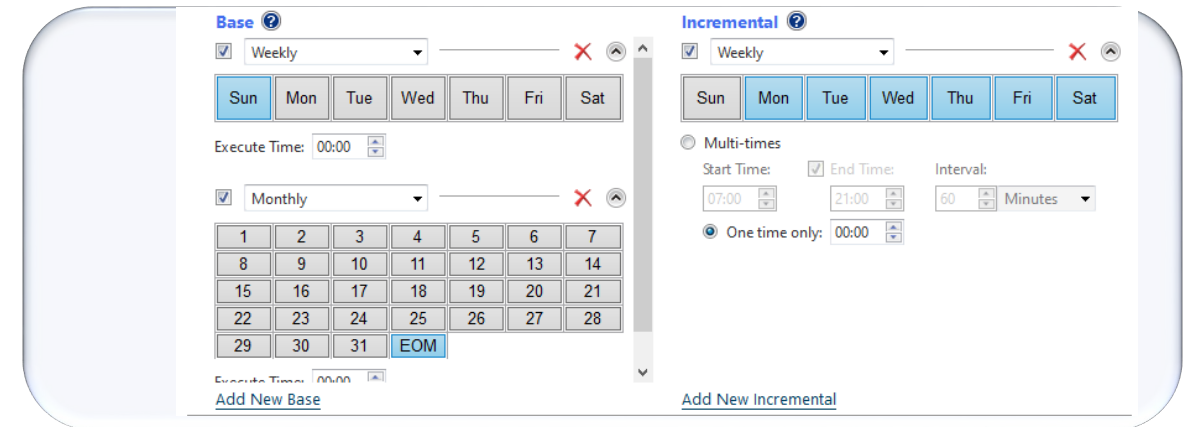
Specified Date / Time

Select by clicking a date and time to schedule a full backup task on a specific date while incremental backup tasks are scheduled for other days.

Customized Schedule Settings

Multi-scheduling

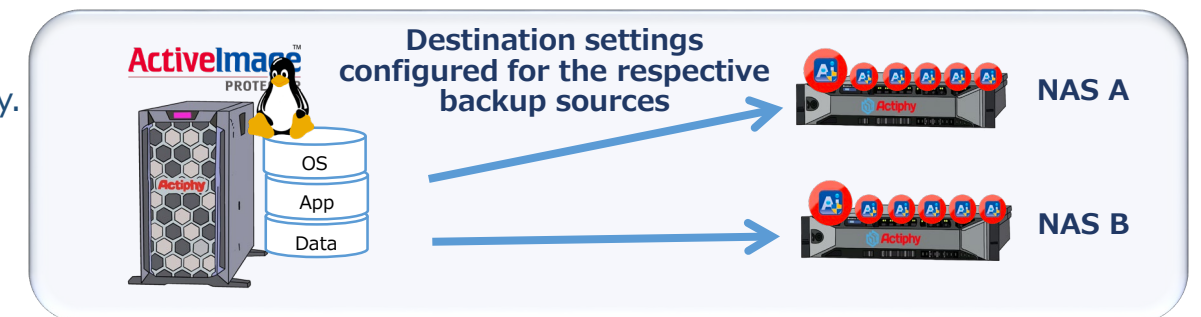
Incremental backup tasks are scheduled on weekly basis while full backup tasks are scheduled at the end of a month.



The screenshot shows the 'Base' and 'Incremental' scheduling panels. The 'Base' panel has a 'Weekly' dropdown, a day selector (Sun-Sat), and an 'Execute Time' of 00:00. The 'Incremental' panel has a 'Weekly' dropdown, a day selector (Sun-Sat), and options for 'Multi-times' (Start Time: 07:00, End Time: 21:00, Interval: 60 Minutes) and 'One time only' (00:00). A calendar view is visible in the background.

Multiple Backup Destination Settings

Multiple backup task settings can be configured to direct backup files to multiple destinations. For example, configure the destination settings depending on the backup source, i.e., backup files of C drive are created in NAS A while backup files of D drive are created in NAS B.





For your inquiry, please contact:
Actiphy Inc.
E-mail: global-sales@actiphy.com
Tel: 81-3-5256-0877



www.actiphy.com