

A decorative graphic on the left side of the slide, featuring a blue and white geometric design with various icons (gear, envelope, refresh, people, atom, document, keyboard) connected by lines, suggesting a network or system architecture.

ActiveImageTM 2022 PROTECTOR

ActiveImage Protector 2022 Desktop

System Protection Solution

for Windows PC

~ Product Summary ~

March 8, 2023

Actiphy, Inc.

System Protection Solution for Windows PC

- 1 . What is ActiveImage Protector 2022 Desktop?
- 2 . Benefits of ActiveImage Protector 2022 Desktop
 - Backup / Recovery
 - File / Folder Backup
 - A variety of Storage Media are supported
 - Disaster recovery solution supporting public cloud storage services
- 3 . Main Features
 - Backup / Recovery
 - Flexible backup schedule setting

System Protection Solution for Windows PC

○ Intuitive and user friendly GUI provides easy-to-use controls of backup / recovery operation for Windows PC

○ Supported storages include S3-compatible object storage, Azure, SFTP server **NEW** as backup destinations

○ File / Folder Backup allows to select a specific file or a folder for backing up and restoring **NEW**

New Features of ActiveImage Protector 2022 Desktop

Supported public cloud storage services include S3-compatible object storage

File / Folder Backup

Support for SFTP servers providing secure communication

Boot Environment Builder without need for installation of Windows ADK

Disk-to-disk copy

Windows 11 is supported.

Subscription and perpetual licenses are now available.

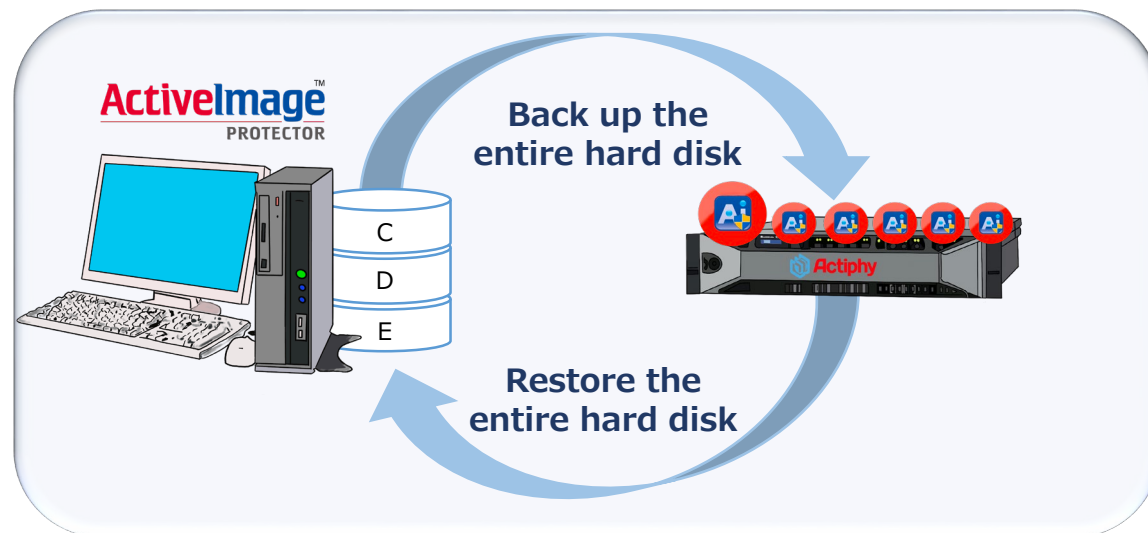


Intuitive and user friendly GUI provides easy-to-use controls of backup operation

Protect the entire system

ActiveImage Protector Desktop backs up and protects your entire hard disk, including the live Windows operating system along with all your applications and data. **In the event of a system failure, backup images can be restored to restart the operation.**

Back up and restore the entire system



Simple backup and recovery operation

Intuitive and user friendly management console provides easy-to-use controls of backup settings and recovery operation. **Even an in-experienced system manager can easily start backup operation.**

Wizard-driven interface guides you through configuring backup settings

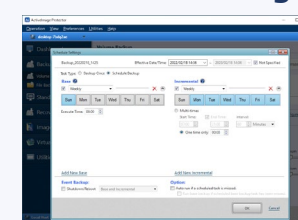
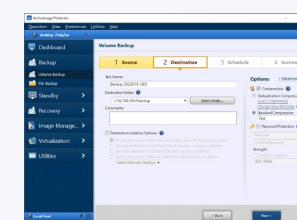
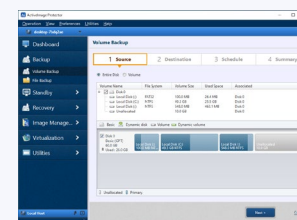
Select a backup source disk



Specify backup destination



Configure backup schedule settings



Wizard-driven interface guides you through restore operation

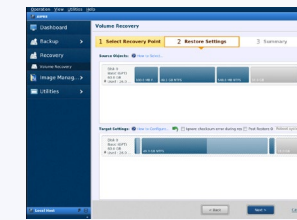
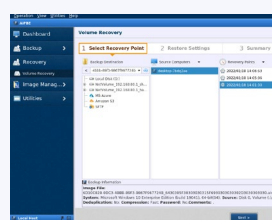
Select point-in-time backup file to restore



Specify restore target disk



Restart PC and restart operation



Restore to the point-in-time state of the PC. No need to configure the respective settings, i.e., network, etc.

The new file / folder backup feature provides granular point-in-time backup of specific file and folder

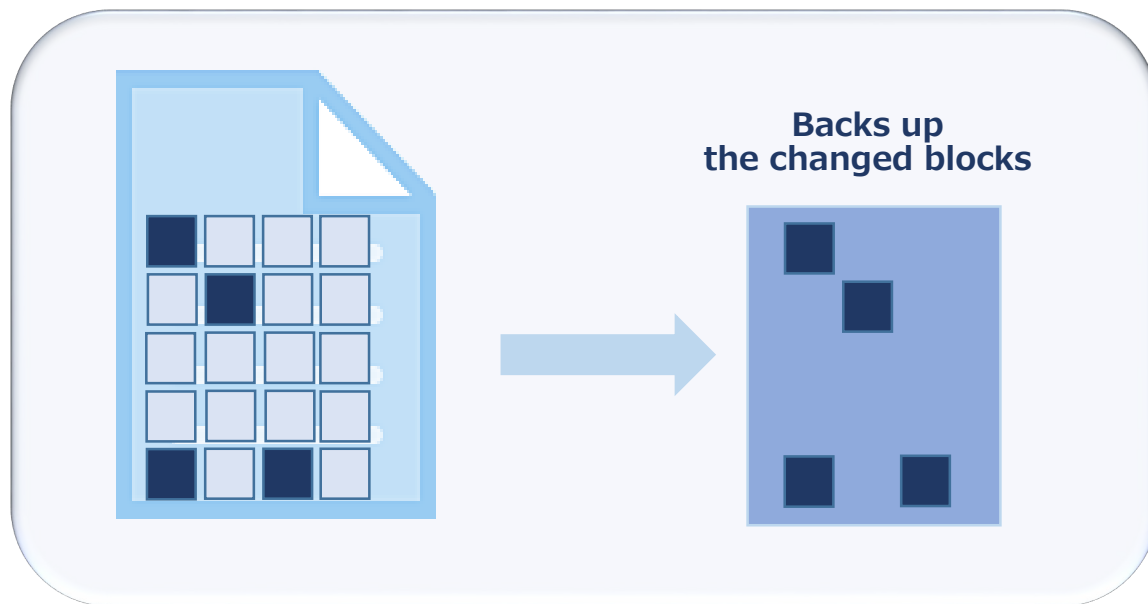
NEW

File / Folder Backup of changed blocks

Select a file / folder and configure the scheduled backup settings.

Daily incremental backup includes only the changed blocks in the file, reducing the storage space requirements.

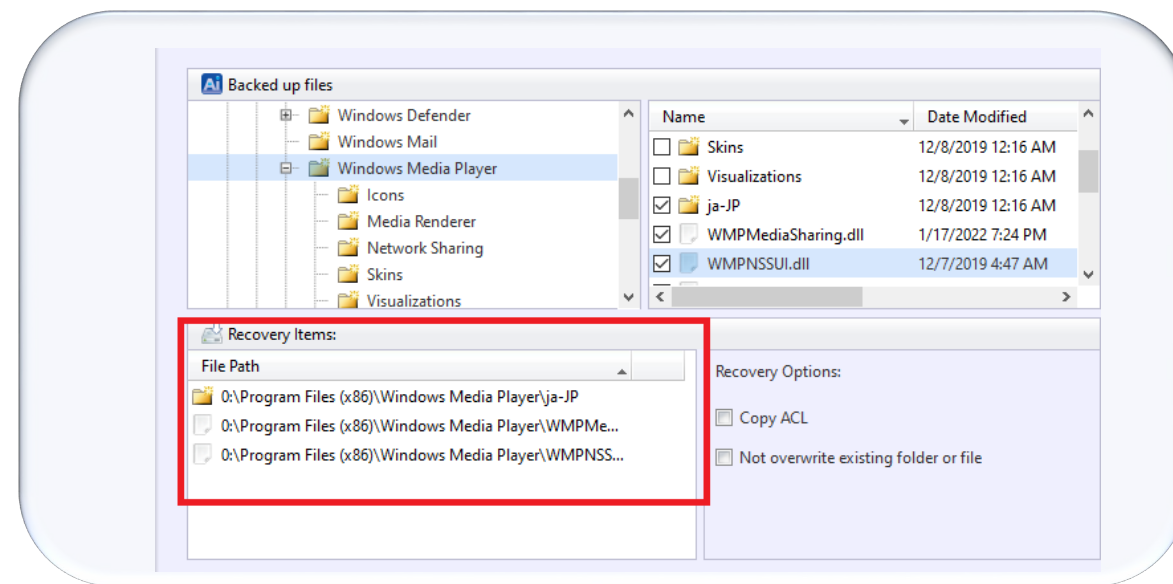
Incremental backup includes only the changed blocks in the file



Restore a file / folder

Select a file / folder to restore from a backup file. The stream information and access rights assigned to files are inclusively restored. **Granular specific file and folder can be flexibly selected and restored.**

Select and restore specific file / folder

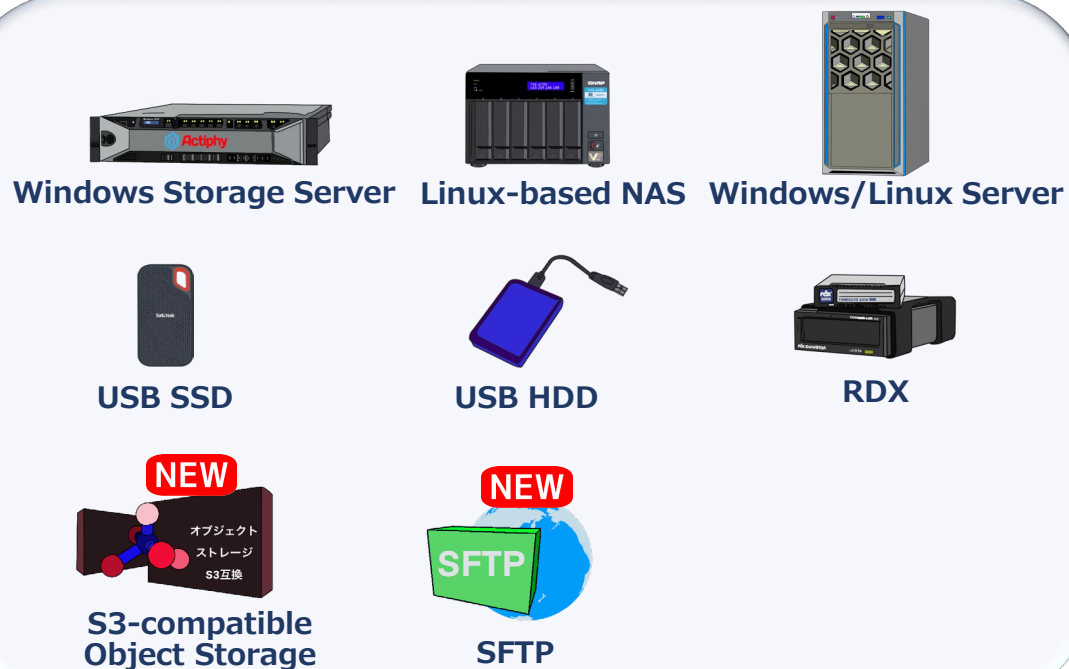


Flexibly select a backup destination depending on the system configuration

Support for a variety of Storage Media

Save your backups to any available storage location, including **USB HDD, cloud object storages, etc., supporting a variety of system configuration and backup policies.**

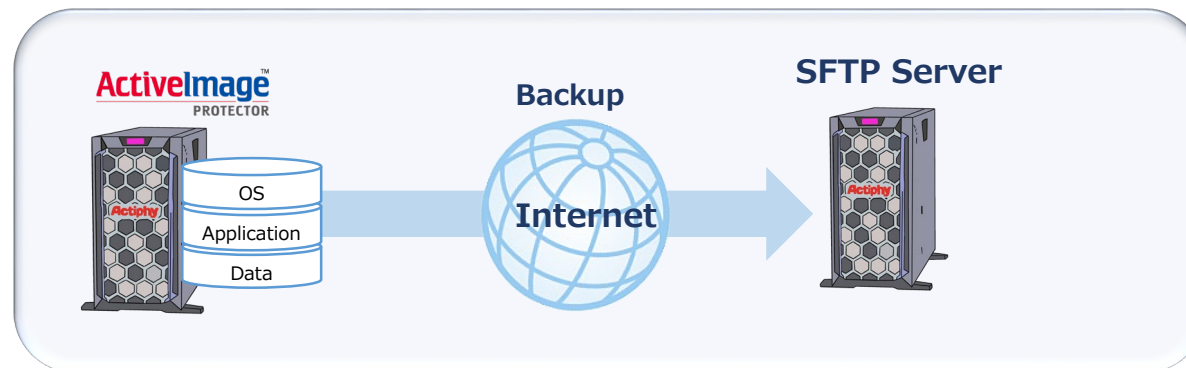
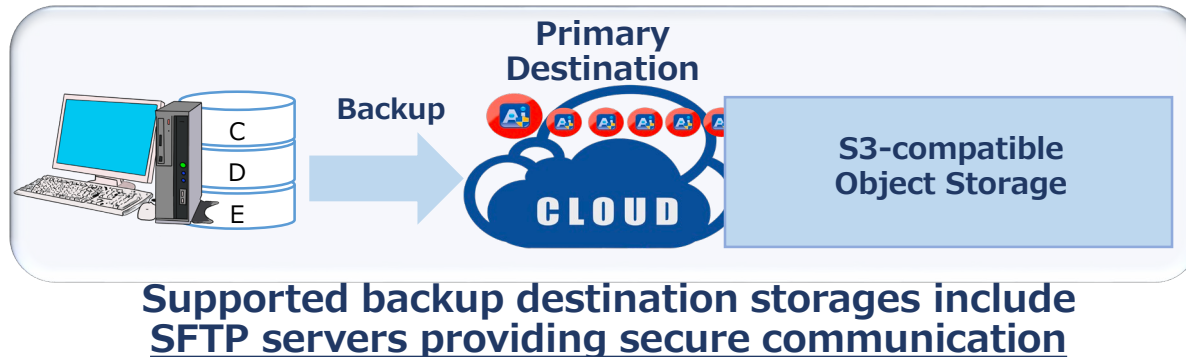
A variety of Storage Media are supported



Save your backups to any available storage location **NEW**

Supported storages include **S3-compatible object storage, SFTP server** as backup destinations.

Backup systems directly to cloud storage

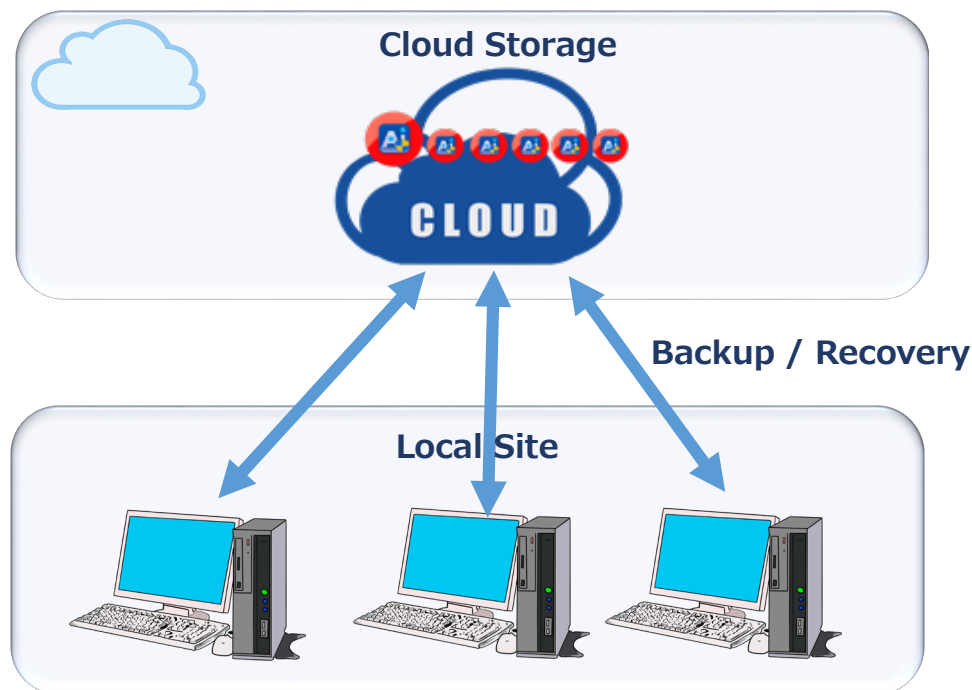


Disaster recovery solution supports public cloud storage services and SFTP Server **NEW**

Cloud storages are supported to save the created backups

Cloud storages are supported to save the created backups directly to cloud storage. **Backup of local Windows PC can be directly restored to the point-in-time state before the system failure took place.** You do not need to have a storage at local site to download a backup file from the cloud storage.

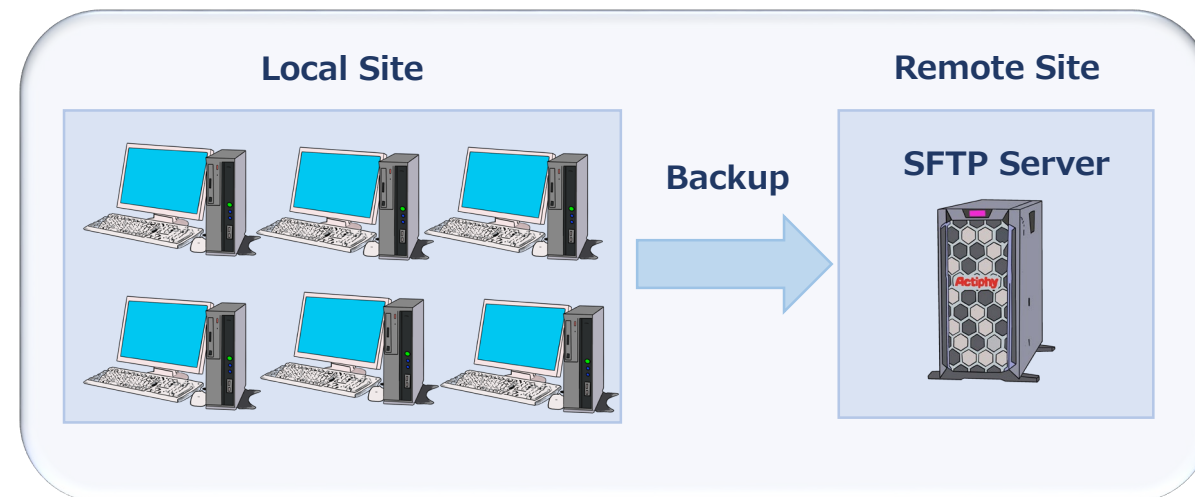
Restore the failed Windows PC from a backup file



SFTP server is supported to save the created backups

In addition to object storage, **SFTP servers providing secure communication is supported to save backup file.** You only need to deploy and specify the server supporting SFTP protocol as the destination storage. For example, backup files can be saved in **SFTP server at remote site, providing disaster recovery solution at low cost.**

Direct backup files to remote SFTP server providing disaster recovery solution



Enhanced convenience and reduced process time

Build boot environment **without** installation of Windows ADK

Windows-based BE builder enables to build boot environment using Windows RE (Windows Recovery Environment) standard to Windows OS **without the need for installation of Windows ADK or Windows PE**. The required drivers are automatically detected and included in boot environment, which enhances the operating convenience and reduces overall field time.

Windows-based BE Builder





Select Windows RE

Choose a tool

Specify a tool to create at Boot Environment.

- ☒ Windows RE
Use the Windows RE that is installed on this computer.
- ☐ Windows Assessment and Deployment Kit (ADK)
Use the Windows ADK provided by Microsoft.
- Please select...

Select Device Driver

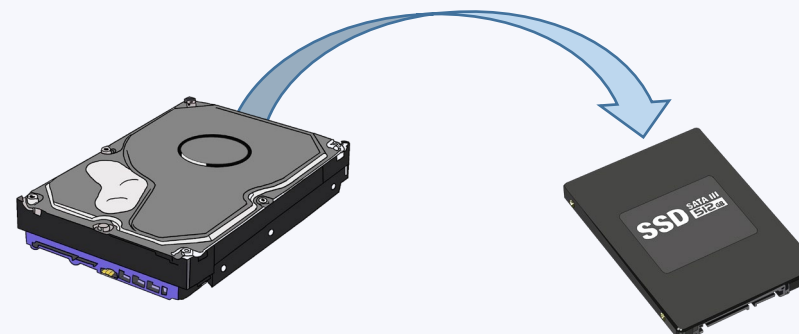
| Manufacturer | Device Name |
|--|--|
|  Network Adapters | |
| <input type="checkbox"/> Intel Corporation | Intel(R) 82574L Gigabit Network Connection |
|  Storage Adapters | |
| <input checked="" type="checkbox"/> Standard NVMe Express Controller | Standard NVMe Express Controller |
|  Tape Drives | |
|  Others Drivers | |

Disk-to-Disk Copy

Disk-to-disk Copy is used when migrating data from a hard disk to a large-capacity disk or to an SSD. The Disk-to-disk Copy feature can select the entire disk or a specific volume to copy, or copy to a higher capacity disk or volume. Data volumes from different disks can be combined using disk-to-disk copy for a new single disk.

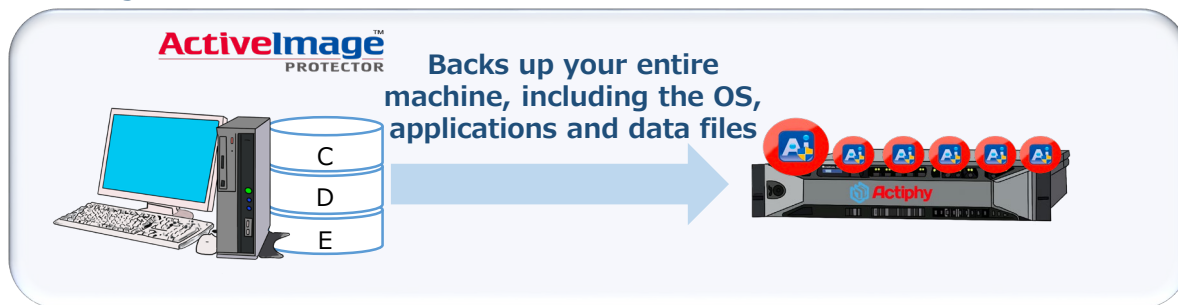
Disk-to-disk Copy Feature

Easily migrate data from
HDD to SSD



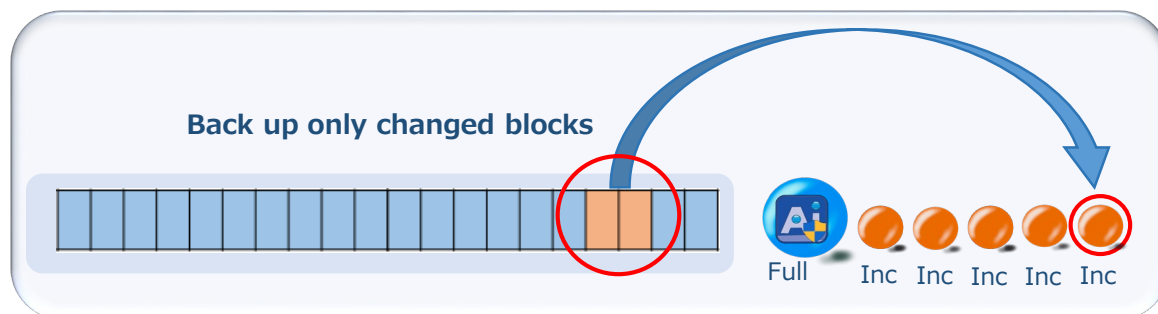
Back up your entire hard disk including OS along with all your applications and data

ActiveImage Protector backs up **your entire machine, including the OS, applications and data files**, while the machine is active and running.



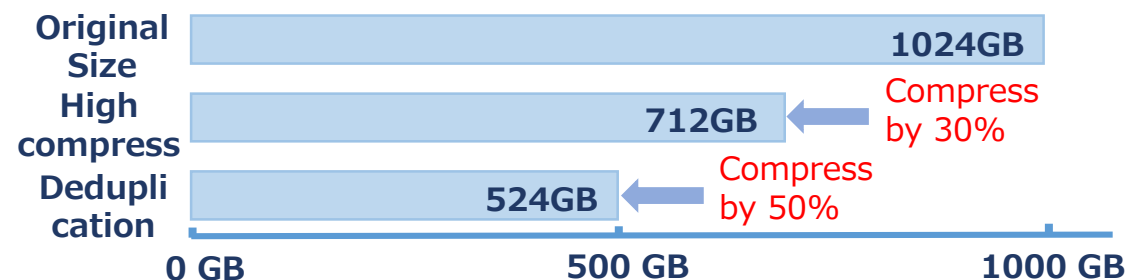
Back up only changes made since the last backup

Incremental backup includes only the changes made since the last backup and is scheduled on regular basis according to the predefined schedule. ActiveImage Protector only runs backup tasks according to the predefined schedule, minimizing the consumption of the system resources on the machine.



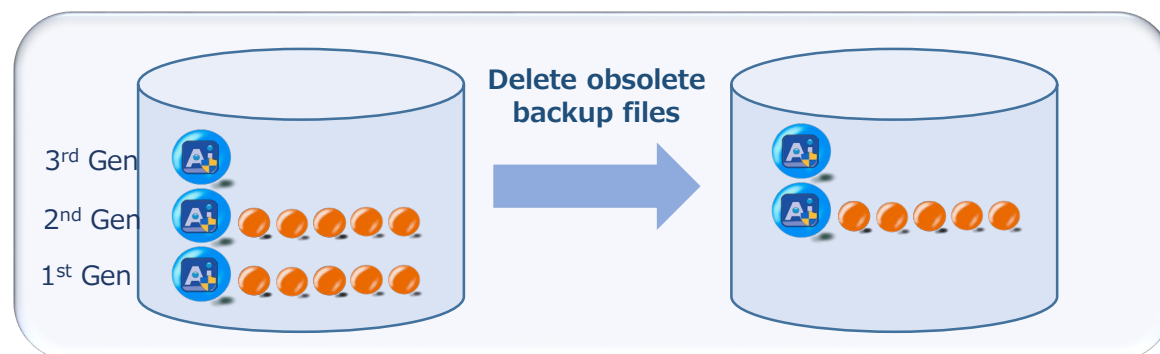
Deduplication Compression reduces storage requirements

Our **Inline Data Deduplication Compression (IDDC)** feature eliminates duplicate data while simultaneously compressing it, resulting in a significant reduction in backup storage requirements and network load.



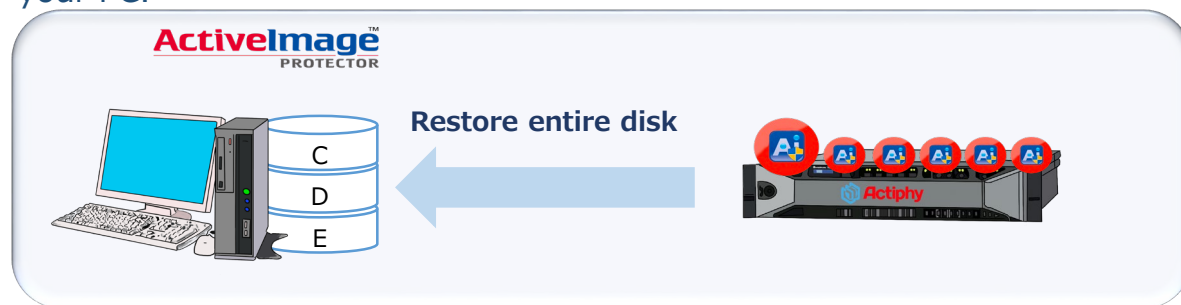
Use Retention Policy to delete obsolete backup image files, resulting in reduction of the storage space.

Retention Policy feature allows you to **automatically delete the obsolete backup image set** when the number of backup image sets reaches the preset limitation and reduce the storage space requirements.



Restore the entire disk

Select the restore target disk in point-in-time backup (recovery point) and your system is restored to the state when the backup was taken. The restore target may be a remote PC or virtual environment as well as your PC.



Restore by volume

A specific volume may be selected to restore from **point-in-time backup (recovery point)**. For example, **only "D:" drive can be selected from the data volume to restore.**



File / Folder Recovery

OFile Recovery Feature

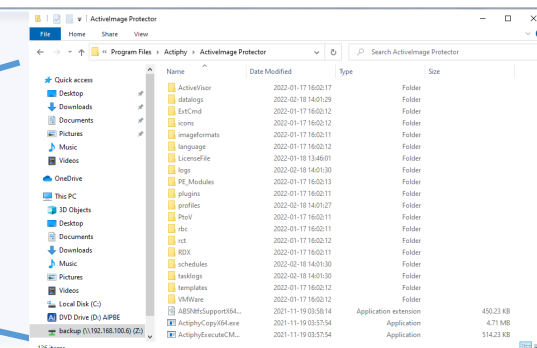
Granular point-in-time recovery of files and folders is enabled. The stream information and access rights assigned to files are inclusively restored. When you only need specific files to restore in order to restart your duties, **File Recovery feature can provide you with flexible action.**



OImage Explorer

Installed as a Windows Explorer extension, Image Explorer allows you to **browse and copy files and folders from ActiveImage Protector image file** without requiring a full image mount, saving your time and system resources. This will allow you to restore individual files or folder.

Click on a backup file

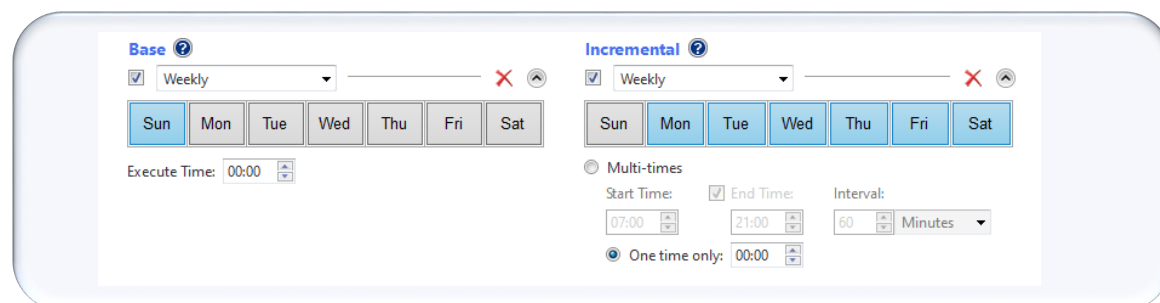


Flexible Multi-scheduling

Backup tasks can be automatically executed according to the one time, weekly or monthly schedule, or a specific day of a week in a specific month.

Weekly

Full backup may be scheduled to execute on the weekend while incremental backup tasks are scheduled from Monday to Friday. Incremental backup can be scheduled to run for multiple times a day.



The screenshot shows the 'Base' and 'Incremental' scheduling panels. The 'Base' panel has 'Weekly' selected with a calendar showing Sunday and Monday highlighted. The 'Incremental' panel has 'Weekly' selected with a calendar showing Monday through Friday highlighted. Both panels include options for 'Execute Time' and 'Multi-times' scheduling with start/end times and intervals.

OMonthly

Select by clicking the date(s) of the month and the time of a day to perform a recurring full base backup tasks while incremental backup tasks are scheduled from Monday to Friday.

ODesignate Specific Days

Select by clicking a specific days of a week to perform a recurring full base backup while incremental backup tasks are scheduled from Monday to Friday.

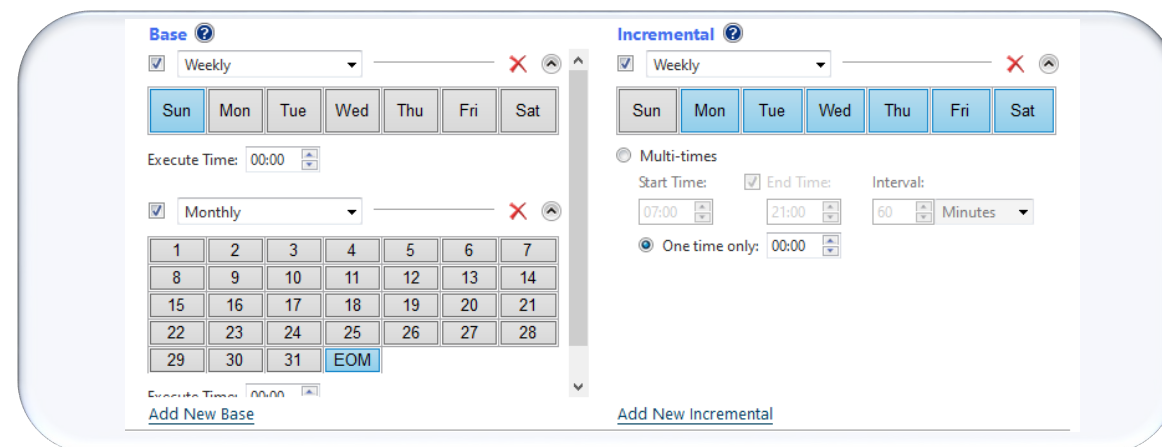
OSpecified Date / Time

Select by clicking a date and time to schedule a full backup task on a specific date while incremental backup tasks are scheduled for other days.

Customized Schedule Settings

OMulti-scheduling

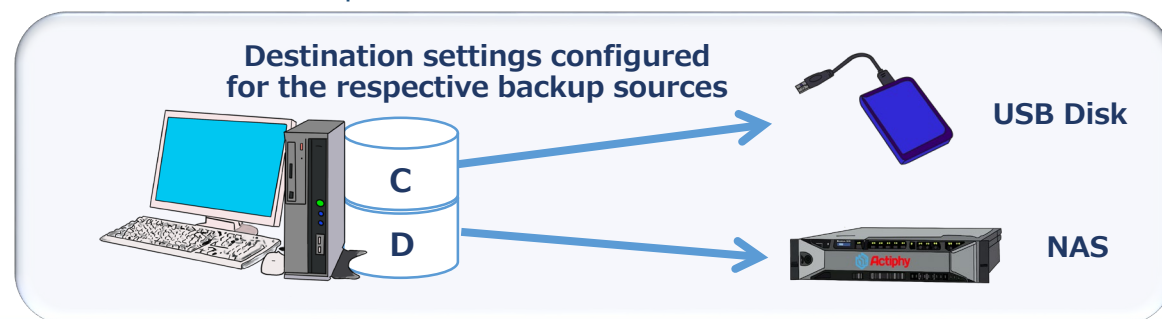
Incremental backup tasks are scheduled on weekly basis while full backup tasks are scheduled at the end of a month.



This screenshot shows the 'Base' and 'Incremental' scheduling panels. The 'Base' panel has 'Monthly' selected, and a calendar is displayed with the 'EOM' (End of Month) option highlighted. The 'Incremental' panel has 'Weekly' selected and shows 'Multi-times' scheduling with a start time of 07:00, end time of 21:00, and an interval of 60 minutes.

OMultiple Backup Destination Settings

Multiple backup task settings can be configured to direct backup files to multiple destinations. For example, configure the destination settings depending on the backup source, i.e., backup files of C drive are created in USB disk while backup files of D drive are created in NAS.





For your inquiry, please contact:
Actiphy Inc.
E-mail: global-sales@actiphy.com
Tel: +81-3-5256-0877



株式会社 アクティブアイ

www.actiphy.com