

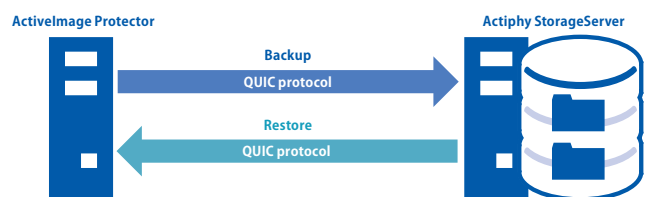
Actiphy StorageServer™

Secured backup storage for exclusive use with ActiImage Protector™

Actiphy StorageServer™ enables to build secured backup storage for exclusive use with ActiImage Protector™ by installing ActiImage Protector™ agent on destination server and using cache device. The use of Actiphy StorageServer™, as an independent destination storage for backup operation, protects the backup image files from being compromised by a ransomware attack. Actiphy StorageServer™ uses QUIC protocol for data transmission, enabling to transfer data more safely with high reliability and ensuring the security for the communication path. Actiphy StorageServer™ is available in Windows and Docker editions.

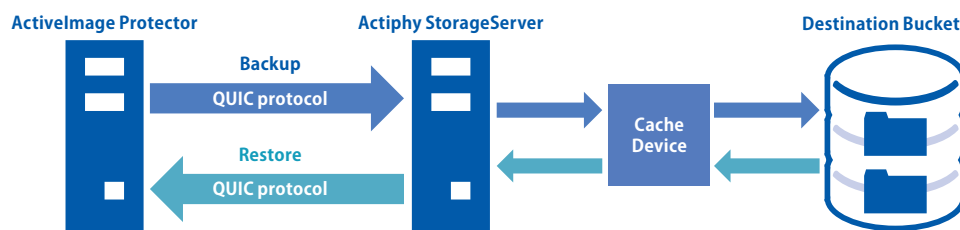
Safeguard backup files from ransomware attack

Actiphy StorageServer™ enables to add a bucket on server of the destination storage dedicated to ActiImage Protector™ backup operation. Since the bucket is created without using network share, the risk of ransomware virus infection can be mitigated. Actiphy StorageServer™ uses QUIC protocol enabling to enhance data transfer speed and ensuring the security for backup data communication path.



Stable backup process speed

The use of HDD storage device, delivering relatively slow read and write speeds, may cause some data in wait for writing to the storage and result in longer backup process. Actiphy's StorageServer™ is engineered to take advantage of cache device in storage server such as USB SSD, delivering faster data transfer speed than the destination storage device, that secures stable backup process and speed. According to our test results, when drawing a comparison between with the use and without the use of a cache device, the use of a cache device made backup process 6 times faster than without the use of cache device.



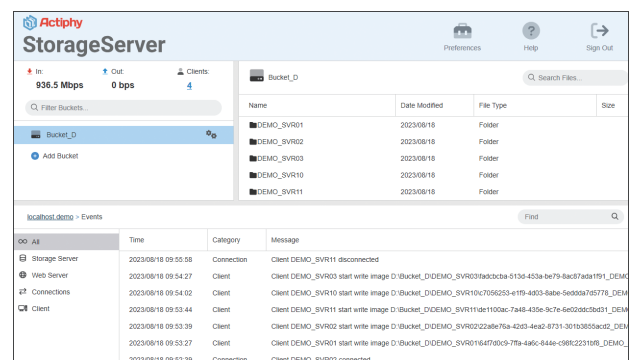
Easy implementation and Web console operation

Actiphy StorageServer™ does not require a high-spec server. Simply install Actiphy StorageServer™ option on an existing NAS or Windows / Linux machine, and you can use Actiphy StorageServer™ as the secure destination storage dedicated to ActiImage Protector™ backup operation. Actiphy StorageServer™'s Web console provides tools for efficient operations, i.e., adding a bucket in destination storage, configuring the settings for cache device, monitoring receiving / transferring data amount, etc.

Actiphy StorageServer™ Web Console

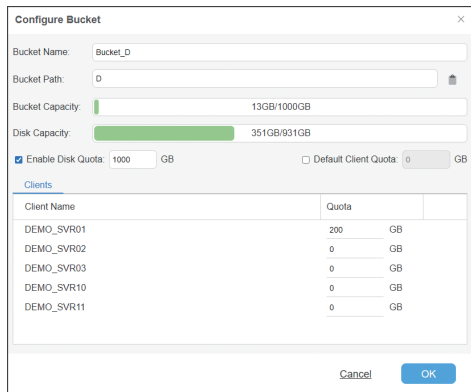


Actiphy StorageServer™ Web Console



Create and configure the settings for a new bucket

You can create a new bucket to destination storage and configure the settings for the maximum limit of the storage space (quota) for the respective buckets or clients.



Configure Bucket

Bucket Name:

Bucket Path:

Bucket Capacity:

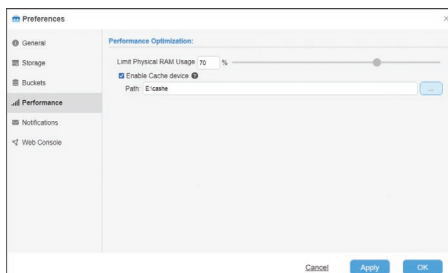
Disk Capacity:

☒ Enable Disk Quota: GB ☐ Default Client Quota: GB

Client Name	Quota
DEMO_SVR01	200 GB
DEMO_SVR02	0 GB
DEMO_SVR03	0 GB
DEMO_SVR10	0 GB
DEMO_SVR11	0 GB

Add cache device

Actiphy StorageServer™ allows you to specify the maximum physical RAM usage on system for primary cache, and cache device to add as secondary cache. The use of cache device faster than the storage which a bucket is added contributes to substantially enhance the performance of backup process.



Preferences

Performance Optimization:

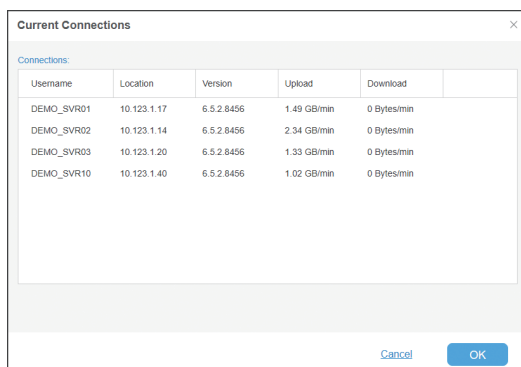
Limit Physical RAM Usage: %

☒ Enable Cache device

Path:

Current communication status and connected clients

This window provides real-time monitoring of the current communication (received and transmitted data) status of the connected clients.

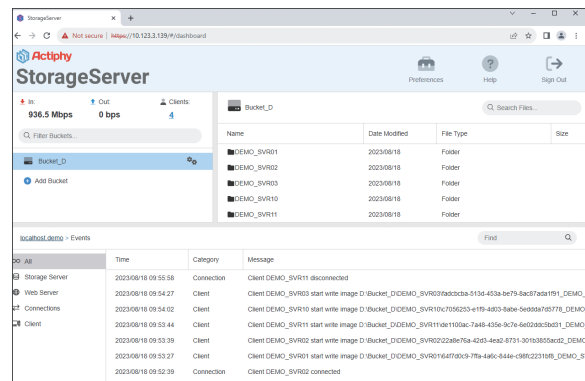


Current Connections

Username	Location	Version	Upload	Download
DEMO_SVR01	10.123.1.17	6.5.2.8456	1.49 GB/min	0 Bytes/min
DEMO_SVR02	10.123.1.14	6.5.2.8456	2.34 GB/min	0 Bytes/min
DEMO_SVR03	10.123.1.20	6.5.2.8456	1.33 GB/min	0 Bytes/min
DEMO_SVR10	10.123.1.40	6.5.2.8456	1.02 GB/min	0 Bytes/min

Monitor event log records

Event pane provides real-time monitoring of add / delete for the remotely connected clients, the added buckets, the status of backup tasks and history of task execution.



StorageServer

In: 936.5 Mbps Out: 0 bps Clients: 4

Bucket_D

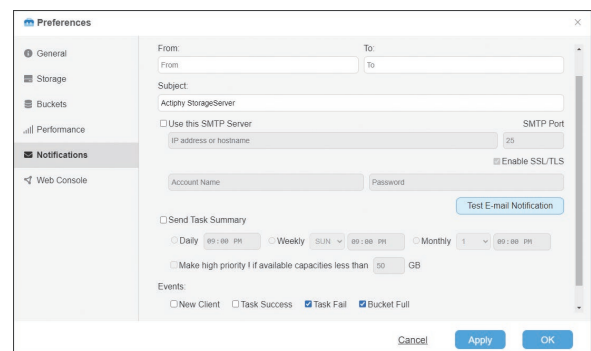
Name	Date Modified	File Type	Size
DEMO_SVR01	2023/08/18	Folder	
DEMO_SVR02	2023/08/18	Folder	
DEMO_SVR03	2023/08/18	Folder	
DEMO_SVR10	2023/08/18	Folder	
DEMO_SVR11	2023/08/18	Folder	

Events

Time	Category	Message
2023/08/18 09:55:58	Connection	Client DEMO_SVR11 disconnected
2023/08/18 09:54:27	Client	Client DEMO_SVR03 start write image D:\Bucket_D\DEMO_SVR10\7050205-e1f9-4d03-babe-5ed09a165778_DEMO_
2023/08/18 09:54:02	Client	Client DEMO_SVR11 start write image D:\Bucket_D\DEMO_SVR11\1100ac-7a48-435e-9c7e-6e0200a5b0d1_DEMO_
2023/08/18 09:53:44	Client	Client DEMO_SVR11 start write image D:\Bucket_D\DEMO_SVR11\1100ac-7a48-435e-9c7e-6e0200a5b0d1_DEMO_
2023/08/18 09:53:39	Client	Client DEMO_SVR02 start write image D:\Bucket_D\DEMO_SVR02\22a0e16a-4205-4a6d-8771-30108055ac22_DEMO_
2023/08/18 09:53:27	Client	Client DEMO_SVR01 start write image D:\Bucket_D\DEMO_SVR01\64706c9-7f9-446c-844c-c98f223108_DEMO_5
2023/08/18 09:52:39	Connection	Client DEMO_SVR02 connected

Alert Feature

E-Mail notification is sent when the specified event occurs, i.e., remotely connected new clients, failed / succeeded task status, insufficient available space in bucket. SSL / TLS mail server is supported.



Preferences

Notifications

From: To:

Subject:

☐ Use this SMTP Server

IP address or hostname: SMTP Port:

☒ Enable SSL/TLS

Account Name: Password:

☐ Send Task Summary

☐ Daily ☐ Weekly ☐ Monthly

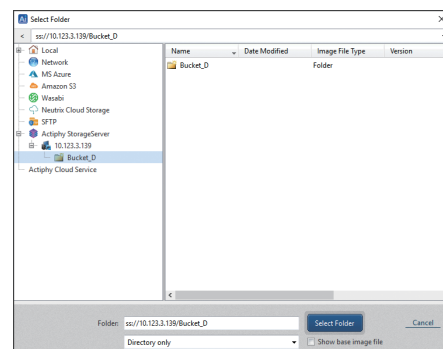
☐ Make high priority if available capacities less than GB

Events:

☐ New Client ☐ Task Success ☒ Task Fail ☒ Bucket Full

Integrate Actiphy StorageServer™ in ActiImage Protector™ to provide backup storage destination

Integrate Actiphy StorageServer™ in ActiImage Protector™ backup operation as the destination storage. Specify and use Actiphy StorageServer™ as backup storage destination on client server.



Select Folder

Folder:

Directory only ☐ Show base image file



Actiphy, Inc.

NCO Kanda-kon'yacho Building, 8 Kanda-kon'yacho, Chiyoda-ku, Tokyo 101-0035, Japan

<https://www.actiphy.com> global-sales@actiphy.com