

ActiveImageTM 2022

PROTECTOR

IT Pro

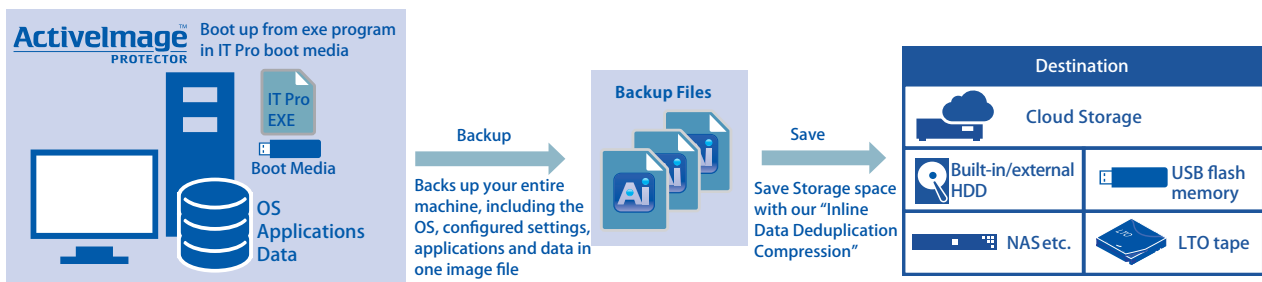
What is ActiveImage ProtectorTM IT Pro ?

A Data and System Protection Solution for IT Professional

ActiveImage ProtectorTM IT Pro is a system and data protection solution for IT professional who frequently performs system maintenance and system installation. ActiveImage ProtectorTM IT Pro enables to take a hot backup of the live server operating in clean state at the initial system installation and before system updates. When disaster strikes, select a backup image to quickly restore for a fast and complete recovery.

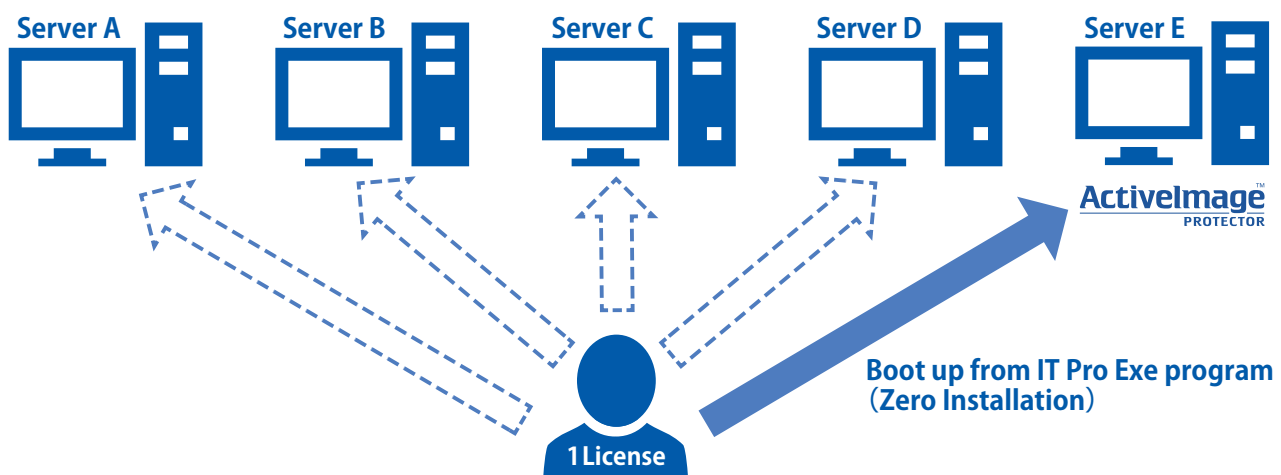
No Installation Required

Without installation of the programs and drivers on server, ActiveImage ProtectorTM IT Pro enables to take a hot backup of the live server operating system / all your applications / data entirely included in one image file by running IT Pro's execution program. For example, when doing system maintenance, you can take a hot-imaging backup of a live server before installing updates by using the ActiveImage ProtectorTM IT Pro's boot media. In the event of emergency, select the backup image to quickly restore for a fast and complete recovery. ActiveImage ProtectorTM IT Pro provides the same features as ActiveImage ProtectorTM, including virtualization and migration from physical machines to virtual machines.



IT Pro licensed per technician

ActiveImage ProtectorTM IT Pro is offered on a subscription basis and is licensed per technician instead of a host machine, allowing one licensed technician to back up and restore an unlimited number of systems on an unlimited number of machines for a period of one year. The technician is licensed to create one execution program (EXE file) for ActiveImage ProtectorTM IT Pro to run backup / restore task.

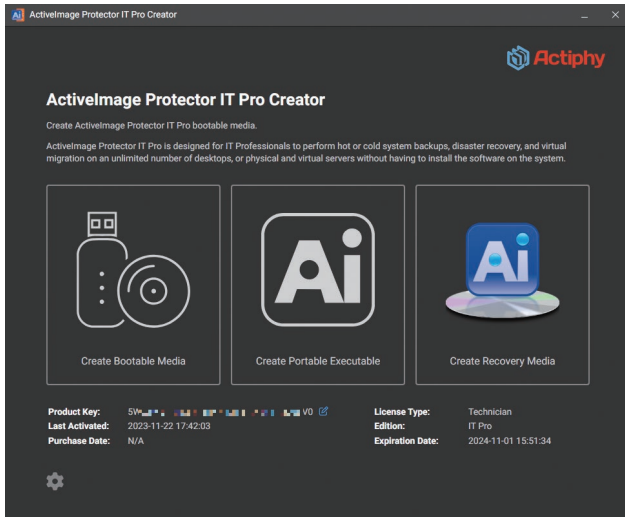


New Features

* The new features are available with the update released in December, 2023

IT Pro Creator's New GUI

ActiveImage Protector™ IT Pro provides new GUI guiding through every steps to boot up from IT Pro boot media / executable file, to create recovery media, etc.



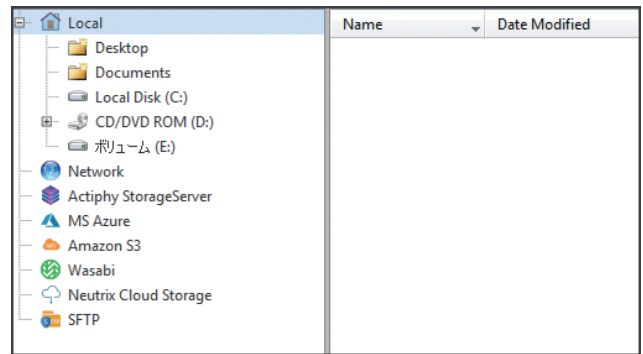
Create Recovery Media

ActiveImage Protector™ IT Pro Creator enables to create a recovery media embedded with the backup source machine's image. Boot up the machine from the recovery media. One click offers quick recovery work performed. You can choose a media type, i.e., USB media, ISO image, optical media to create a recovery media.



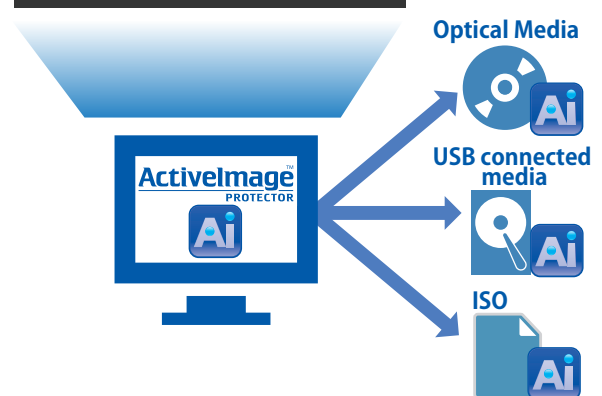
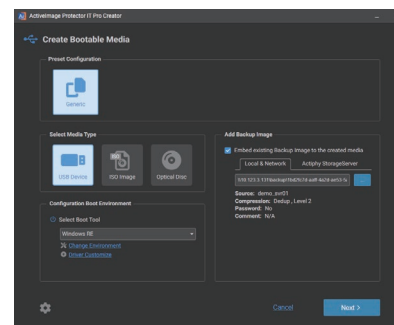
Support for Actiphy StorageServer™

Actiphy StorageServer™ is now supported, enabling to build secure backup storage for exclusive use with ActiveImage Protector™. Also, cloud storages, including Amazon S3, Azure Storage, Wasabi, Neutrix Cloud are supported.



Bootable media embedded with the master backup

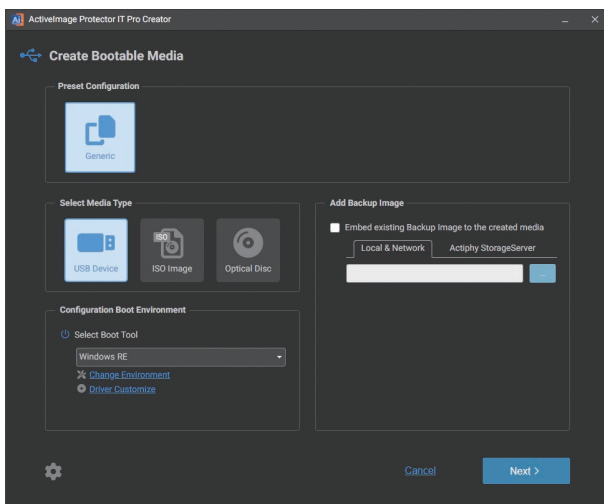
ActiveImage Protector™ IT Pro Creator enables to create a bootable media with the backup source machine's image embedded. Recovery can be performed with the boot media alone, without the need for the dedicated destination storage device.



IT Pro Boot Environment

Creating bootable media (IT Pro Creator)

IT Pro Creator guides through every steps to create a boot media, executable file (EXE file) / recovery media. The boot environment can be built based on Windows RE standard with Windows OS. You can specify the device driver(s) to include and create the boot environment. IT Pro Creator enables you to choose a media type from USB memory, HDD, SSD, ISO image and optical media.



■ Boot Media

Use the boot media to boot up the computer to perform system recovery, cold backup, etc. The created boot media comes with the EXE file to run the executable program on Windows system. Without installation of the programs on server, ActiveImage Protector™ IT Pro enables to take a hot backup of the live operating system.

■ Executable file (EXE File)

The EXE file is a standalone execution program included in IT Pro. Run the EXE file on Windows system and you can take a backup without the need for installation of the programs

■ Recovery media

IT Pro Creator enables to create a recovery media embedded with the source machine's backup image. Boot up the computer from the recovery media and one-click offers quick recovery work performed. If you are not allowed to bring in a USB media, you can use optical media to create recovery media.

Backup Features

Fast backup of the entire machine

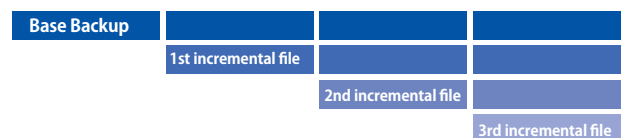
Run IT Pro's executable program (EXE file) to boot up the computer and quickly back up the entire disk or a volume including Windows server / PC's OS, applications and data to a disk image. When a disaster strikes, select a backup image to quickly restore for a fast and complete recovery. Use the File or Folder Recovery option to restore a specific file or a folder from a backup image file.

Cold-Imaging backup for static Windows machines

Start up your computer from IT Pro's bootable media to create a backup image of a clean static system volume (immediately after installation of OS). Cold-imaging backup saving the point-in-time state of the failed system is convenient to examine the cause of the system failure.

Incremental backup efficiently saves process time

Incremental backups save only changes made from the last backup, saving backup process time and reducing storage demand. The changes made while doing system maintenance can be frequently and efficiently backed up. Specify a backup file (recovery point) made at a point in time, so that the base (full) backup and the incremental backups in incremental chain are restored.



Save storage space with (IDDC)

Our Inline Data Deduplication Compression feature eliminates duplicate data while simultaneously compressing it, resulting in a significant reduction in backup storage requirements (reducing mostly the half). Backup using IDDC does not increase the overall backup processing time. No special configuration settings, options or expensive storage device featured with Deduplication are required.

A variety of Storage Media are supported

Save your backups to any available storage location, including local HDD, USB storage, NAS, SAN (fibre channel), SFTP server, LTO or RDX tape and cloud storage services (Wasabi, Amazon S3, Azure Storage, Neutrix Cloud, S3 compatible object storage), etc., using a variety of system configuration and backup policies.

Encryption of Backup Images

You can create password-protected and encrypted backup images and up to AES 256-bit encryption is supported. Enabling the encryption for the backup image file safely protects the data in backup files from unauthorized access and ensures that the backup file cannot be compromised.

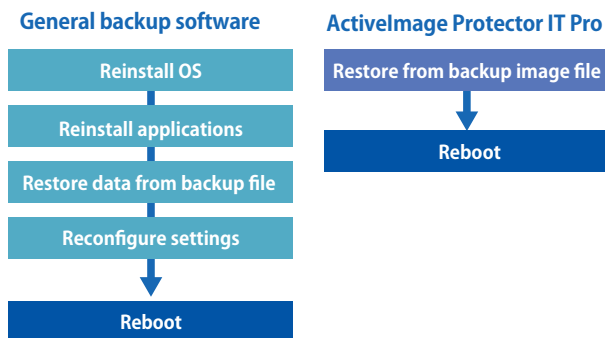
Run scripts

Scripts can be implemented to run before, after, or during the moment snapshots are taken or after the backup image has been created. An example would be to execute a user-specified script to purge database cache before taking a snapshot and then resume the database after taking a snapshot (before starting a backup task), or copy the created backup files, etc.

Restore Features

Fast and full-state recovery from a backup file

In the event of a failure, ActiveImage Protector™ can quickly restore a backup, bypassing the time consuming processes of reinstalling the OS, applications, configuration settings, reapplication of drivers, and data recovery. The built-in wizards guide you through every step to ensure recovery from the backup image file reducing the IT engineers' workload.



File Recovery

In the event of a system failure, you may only need specific files to restore in order to maintain continuity. ActiveImage Protector™ IT Pro provides File / Folder Recovery from a backup file. All stream information and access rights of the individual files are inclusively restored.

Restore to physical machines with different hardware configuration

A.I.R (Architecture Intelligent Restore) included in ActiveImage Protector™ Boot Environment is designed to install compatible storage controller drivers after the recovery process and ensure the start up of the restored OS on physical machines with different hardware configuration.

Enlarge or reduce target volumes or partitions during recovery

Only NTFS volumes may be restored to a volume in a size larger or smaller than the original source volume. For example, when restoring to a volume in a smaller size, reduction of restore target volume and flexible layout changes are supported.

Fast Bare Metal Recovery

In the event of a hard disk failure and replacing with a new hard disk (bare metal disk), ActiveImage Protector™ 's lightning-fast restore engine dramatically speeds up recovery time by directly restoring a backup file without the need for initializing and formatting bare metal disk.

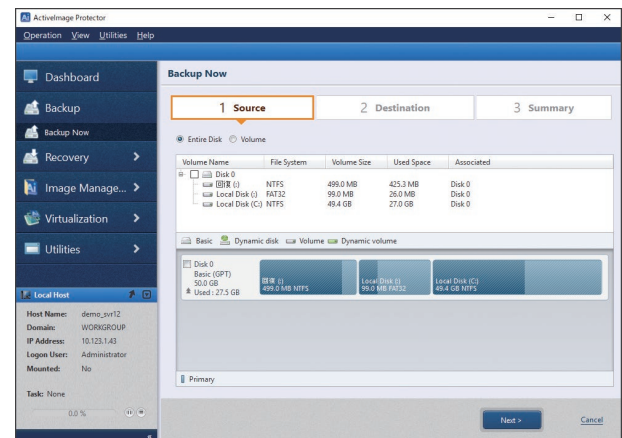
Operation

Management console provides tools for efficient operations

ActiveImage Protector™'s GUI provides dashboard window enabling real time monitoring of the status of tasks, logs, schedules and disk information. Backup / Restore wizards windows make the software operation more intuitive.

A VNC viewer provided for remote operation in boot environment

A VNC viewer is now provided to remotely operate the boot environment. System administrators can now restore the failed system in boot environment via VNC instead of the local machine.



Migration to virtual environment

Virtual conversion utility

A virtual conversion utility is provided to convert a backup image file or physical disk to virtual disk bootable as virtual machine. Conversion to the latest virtual disk format, VMware vSphere VMDK, Microsoft Hyper-V VHD / VHDX is supported.

Conversion from a backup file to virtual machine

The P2V conversion supports Microsoft Hyper-V, VMware vSphere as the target host to create the virtual machine attached with a virtual disk converted from a backup image file providing an immediate boot up of the virtual machine.

Conversion from a hard disk to virtual machine

The P2V conversion feature supports direct conversion from a hard disk to a Microsoft Hyper-V, VMware vSphere virtual disk format to create a virtual machine attached with the converted virtual disk. This bypasses P2V conversion from an image file reducing process time.

Virtualization Adapter

The driver for virtual machine can be injected into the current image file, which is saved as the ActiveImage Protector™ differential file (.aix). The differential file may be restored as a virtual machine.

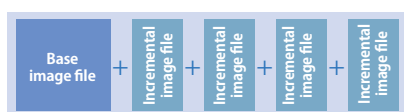
Management of Backup Files

Image Mount

ActiveImage Protector™ can quickly mount an image file as a drive, allowing the restore of any files or folders from the backup image file. When backup image file is mounted as a writable drive, the changes made on the drive will be saved as a differential file.

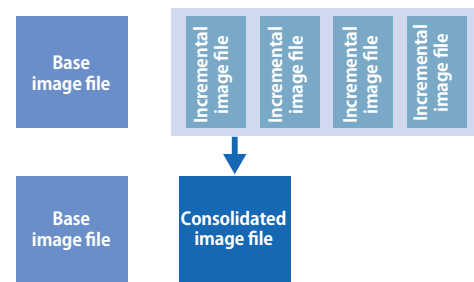
Archive Backup Files

Use the archive feature to unify a full base image file and all associated incremental files into a single backup file.



Consolidate backup files

Regularly scheduled recurring incremental backup tasks create a growing and sometimes unmanageable number of incremental files. The Consolidation feature consolidates an uninterrupted series of incremental backup image files to a single file.



Actiphys, Inc.

NCO Kanda-kon'yacho Building, 8 Kanda-kon'yacho, Chiyoda-ku, Tokyo 101-0035, Japan

<https://www.actiphys.com> global-sales@actiphys.com